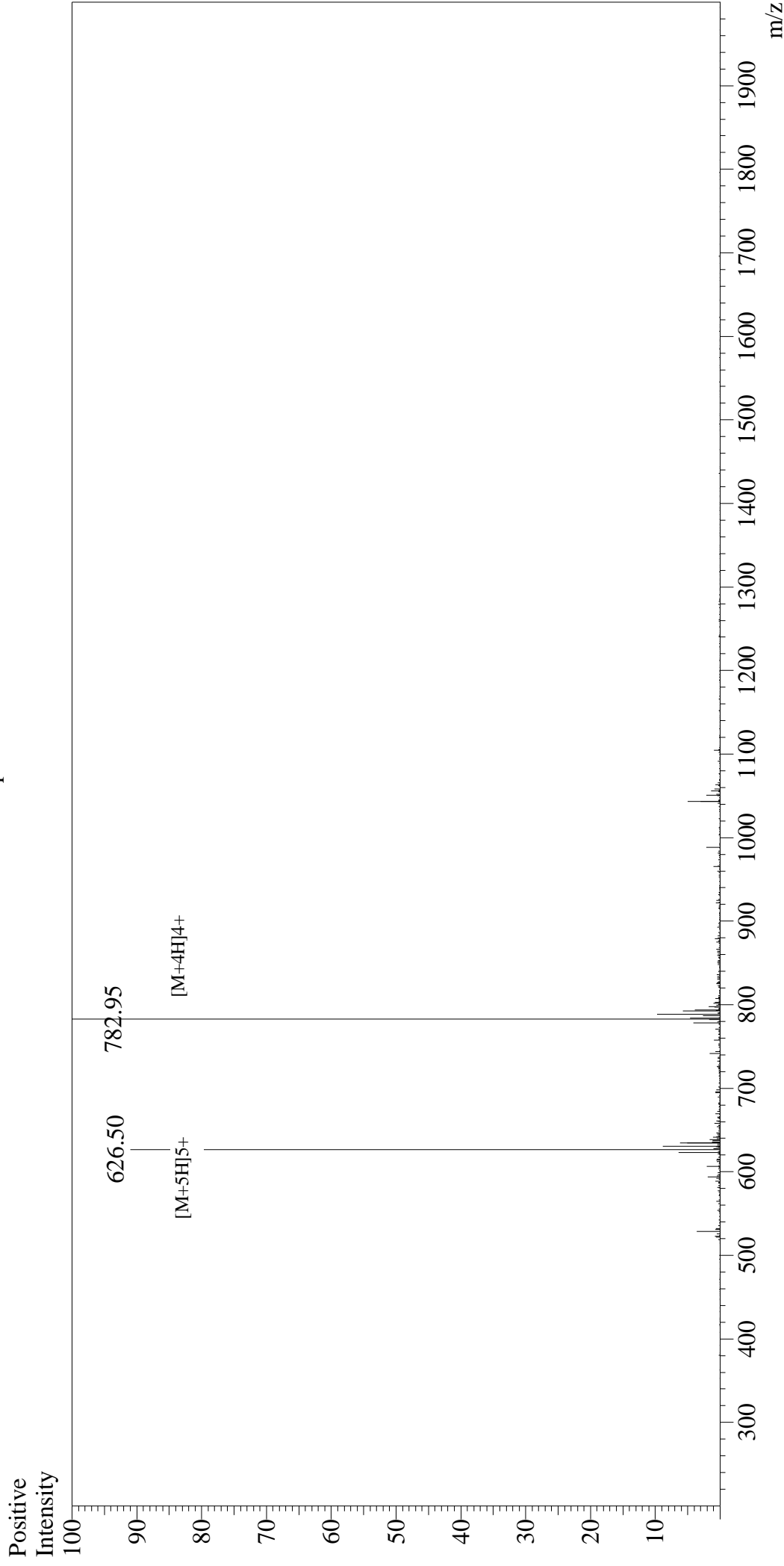


# Mass Spectrum



## Sample Information

User : Gary  
Month-Day Processed : 06/13/18  
Time Processed : 15:58:16  
Injection Volume : 0.2  
Sample Name : Calcitonin Gene Related Peptide (CGRP) (8-37), rat  
Cat No. : RPI1090  
Lot No. : PE8521806  
Theoretical MW : 3127.60  
Observed MW : 3127.80

Interface : ESI  
Nebulizing Gas Flow : 1.5L/min  
CDL Temp : 250°C  
Block Temp : 200°C

Interface Bias : +4.5kV  
Drying Gas Flow : 5 L/min  
T.Flow : 0.2ml/min  
B.conc : 50%H2O/50%MeOH