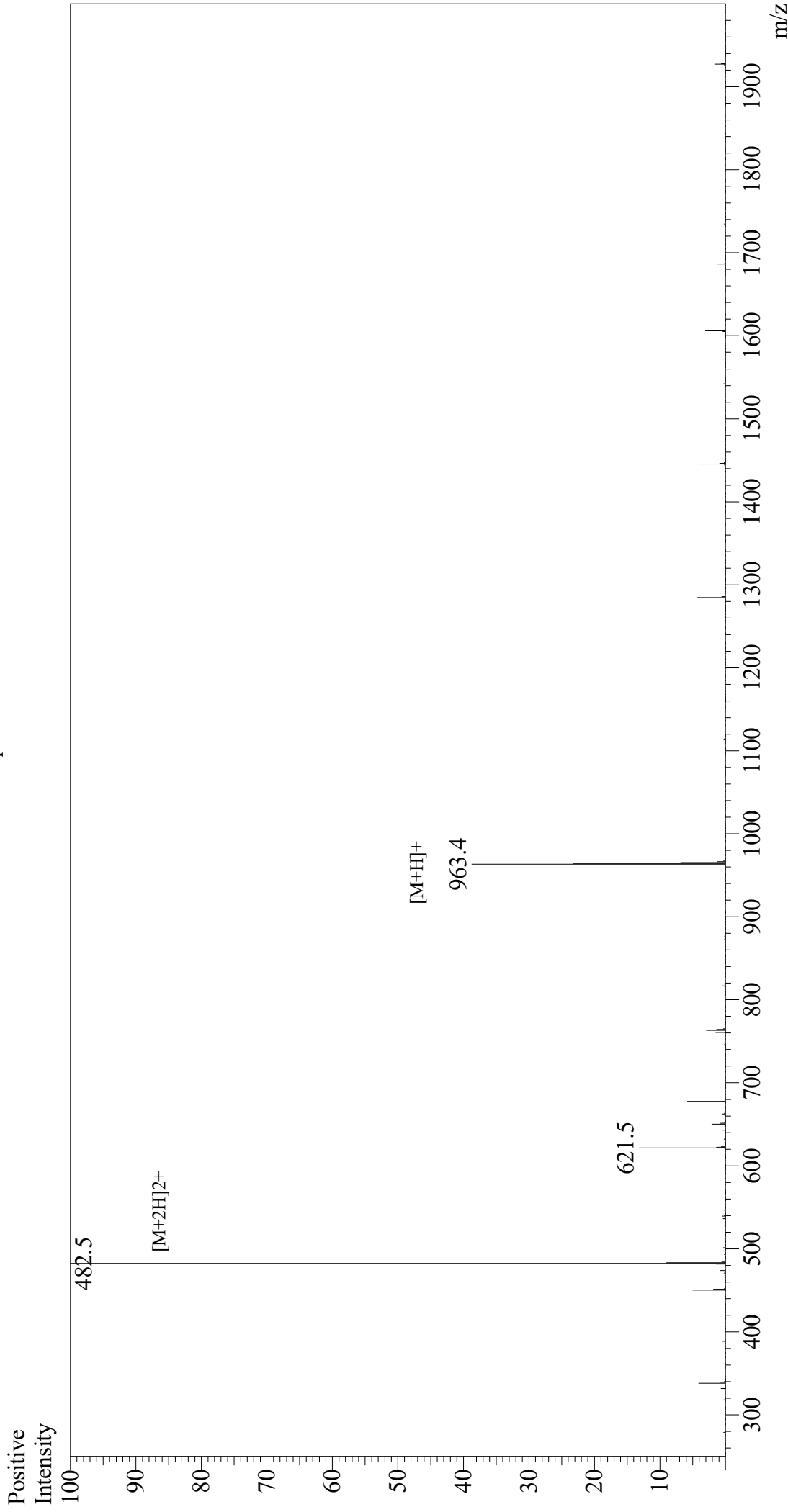


Mass Spectrum



Sample Information

Month-Day Processed : 04/26/21
Time Processed : 9:52:09 PM
Injection Volume : 0.4
Sample Name : OVA Peptide (257-264)
Cat No. : RP10611
Lot No. : E4750021D
Theoretical MW : 963.13
Observed MW : 963.0

Interface : ESI
Nebulizing Gas Flow : 1.5L/min
CDL Temp : 250
Block Temp : 200

Equipment : GK11010007
Interface Bias : +3.5 kV
Drying Gas Flow : 5 L/min
T.Flow : 0.2 ml/min
B.conc : 50% H_2O /50% $MeOH$