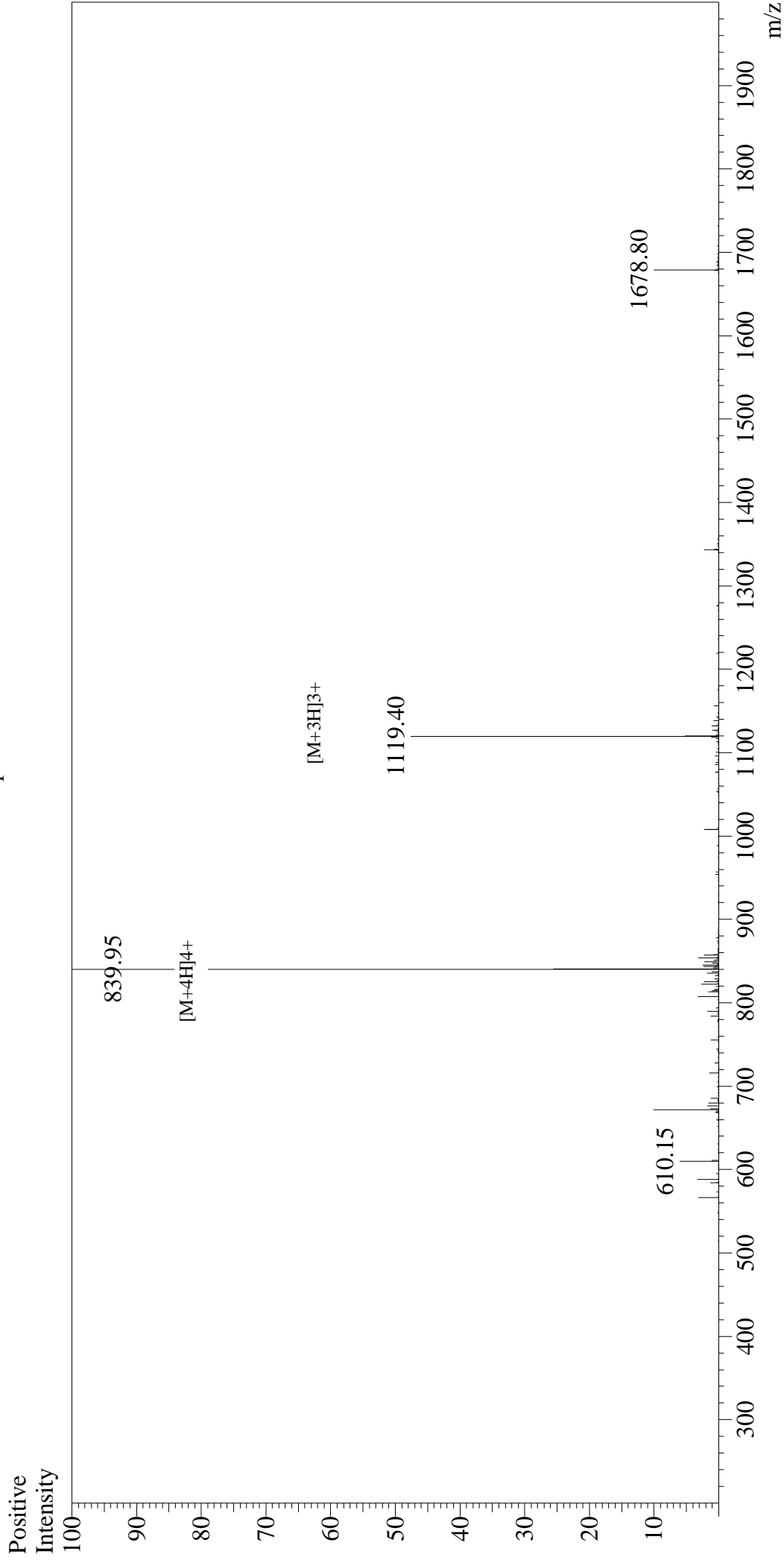


Mass Spectrum



Sample Information

User : Gary
Month-Day Processed : 06/27/18
Time Processed : 15:35:56
Injection Volume : 0.2
Sample Name : Glucagon-Like Peptide (GLP) I (7-37)
Cat No. : RPI2738
Lot No. : PE2711806
Theoretical MW : 3355.68
Observed MW : 3355.80

Interface : ESI
Nebulizing Gas Flow : 1.5L/min
CDL Temp : 250°C
Block Temp : 200°C

Interface Bias : +4.5kV
Drying Gas Flow : 5 L/min
T.Flow : 0.2ml/min
B.conc : 50%H2O/50%MeOH