

Sample Name :Glucagon (1-29), Human, Hydrochloride Salt
 Cat. No. : RP10772
 Lot. No. : PE6921710

Pump A : 0.065% trifluoroacetic in 100% water (v/v)
 Pump B : 0.05% trifluoroacetic in 100% acetonitrile (v/v)
 Total Flow:1 ml/min
 Wavelength:220 nm

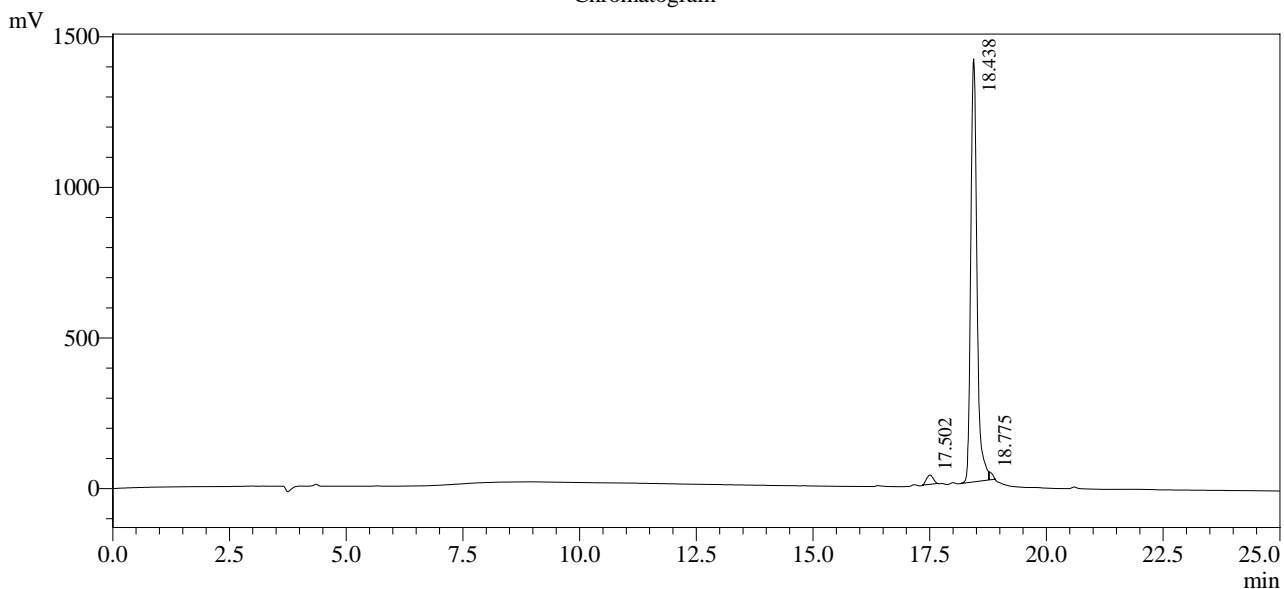
| Time | Unit | Command | Value | Comment |
|-------|------------|---------------|-------|---------|
| 0.01 | Pumps | Pump A B.Conc | 5 | |
| 25.00 | Pumps | Pump A B.Conc | 65 | |
| 25.01 | Pumps | Pump A B.Conc | 95 | |
| 31.00 | Pumps | Pump A B.Conc | 95 | |
| 31.01 | Pumps | Pump A B.Conc | 5 | |
| 40.00 | Pumps | Pump A B.Conc | 5 | |
| 40.01 | Controller | Stop | | |

<<Column Performance>>

<Detector A>

Column : Inertsil ODS-3 4.6 x 250 mm

Chromatogram



1 Det.A Ch1 / 220nm

Peak Table

Detector A Ch1 220nm

| Peak# | Ret. Time | Area | Height | Area % |
|-------|-----------|----------|---------|---------|
| 1 | 17.502 | 312164 | 30896 | 2.315 |
| 2 | 18.438 | 13040034 | 1404493 | 96.708 |
| 3 | 18.775 | 131754 | 26339 | 0.977 |
| Total | | 13483952 | 1461728 | 100.000 |