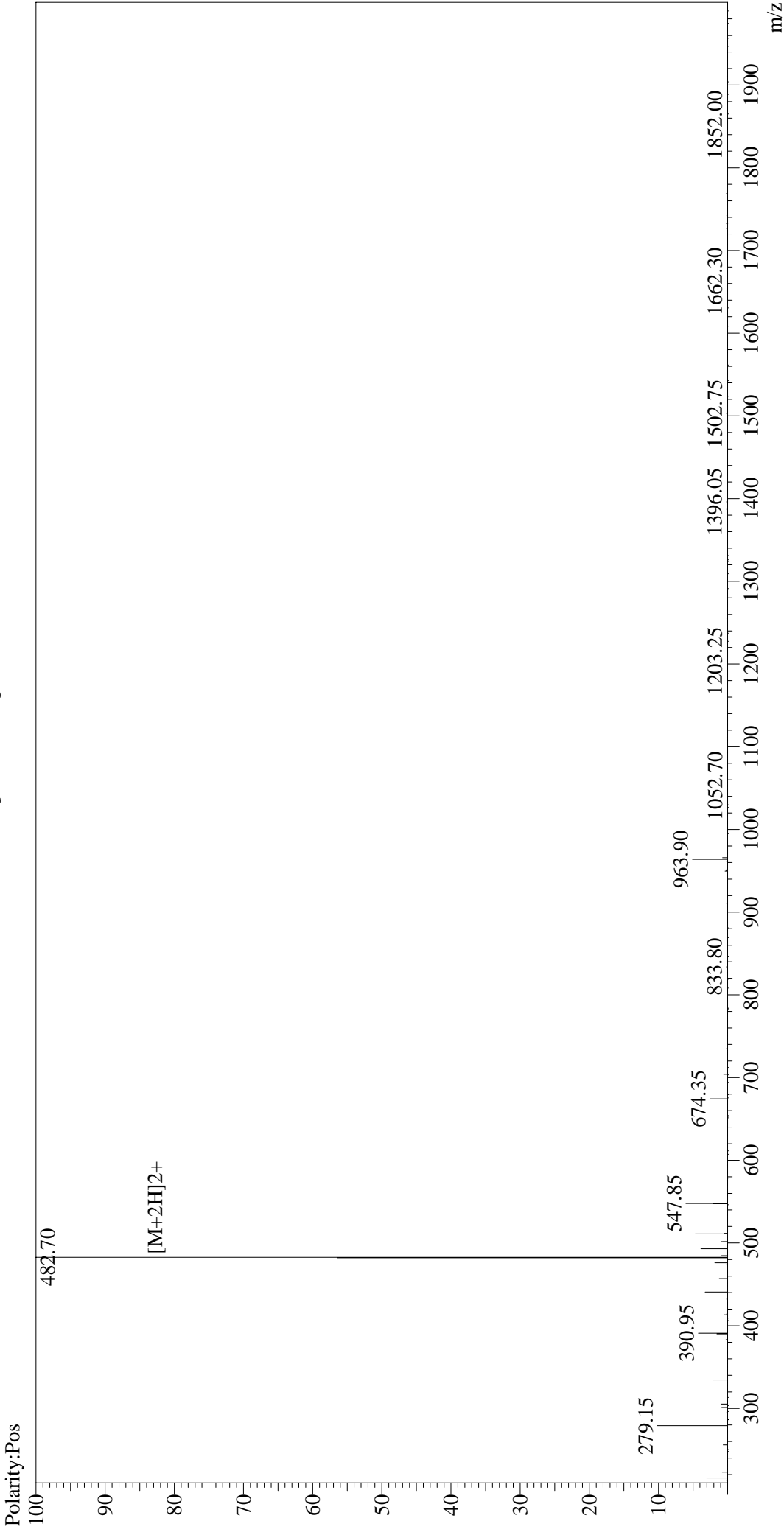


MS Spectrum Graph



Interface :ESI  
Nebulizing Gas Flow :1.5L/min  
CDL Temp :250°C  
Block Temp :200°C

Interface Bias : +4.5 kV  
Drying Gas Flow :5 L/min  
T.Flow :0.2 ml/min  
B.conc :50%H2O/50%MeOH

Sample Information

Acquired by : Admin  
Date Acquired : 2016-12-28 13:02:25  
Injection Volume : 1  
Sample Name : OVA Peptide (257-264)  
Cat No. : RP10611  
Lot No. : PE9821612  
Theoretical MW : 963.13  
Observed MW : 963.40