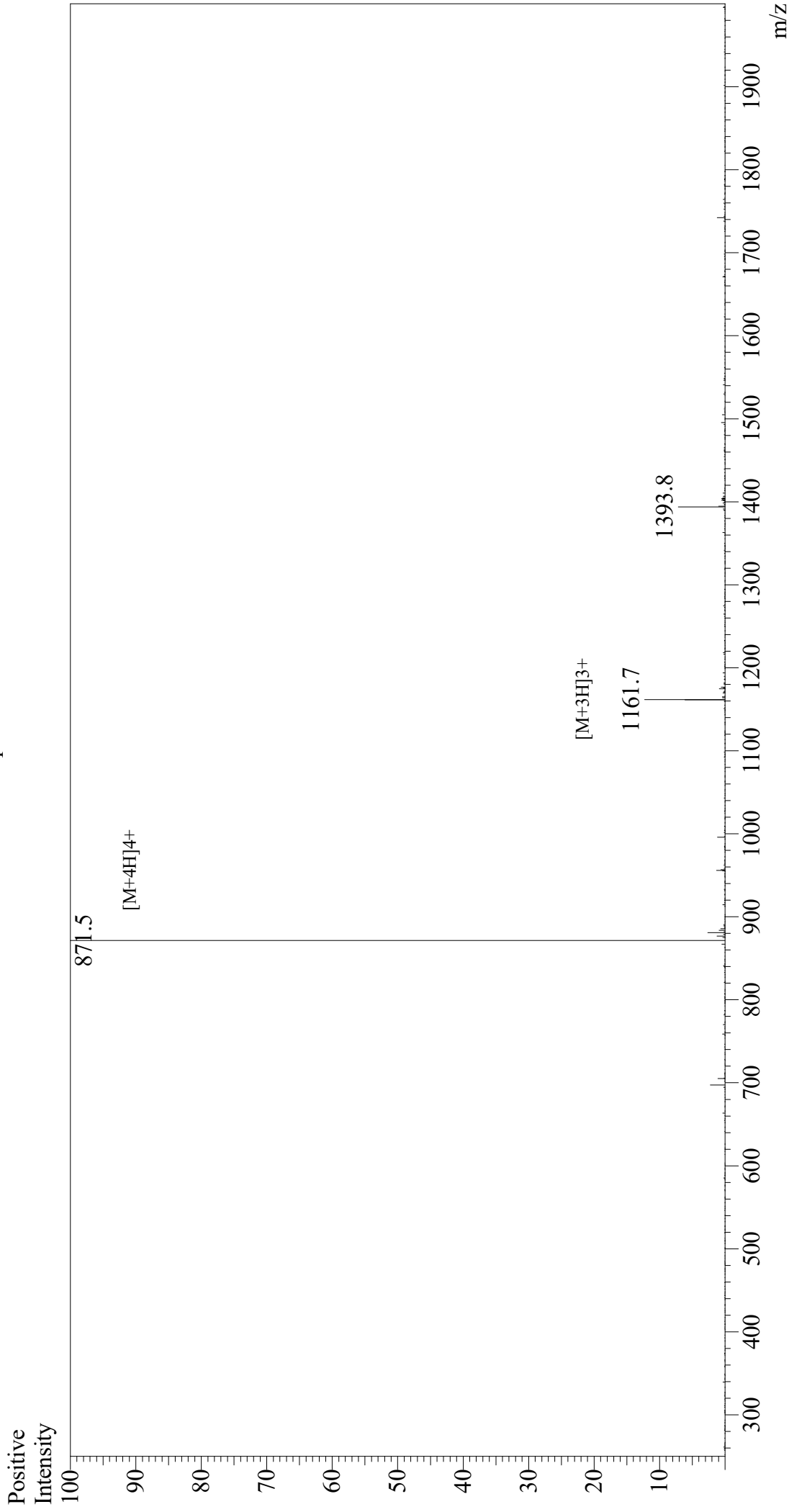


Mass Spectrum



Sample Information
Month-Day/Processed : 07/22/21
Time Processed : 10:50:28 AM
Injection Volume : 0.4
Sample Name : Glucagon (1-29), Human
Cat No. : RP10772
Lot No. : E6507521G
Theoretical MW : 3482.80
Observed MW : 3482.0

Interface : ESI
Nebulizing Gas Flow : 1.5L/min
CDL Temp : 250
Block Temp : 200

Equipment : GK11010007
Interface Bias : +3.5 kV
Drying Gas Flow : 5 L/min
T.Flow : 0.2 ml/min
B.conc : 50%H₂O/50%MeOH