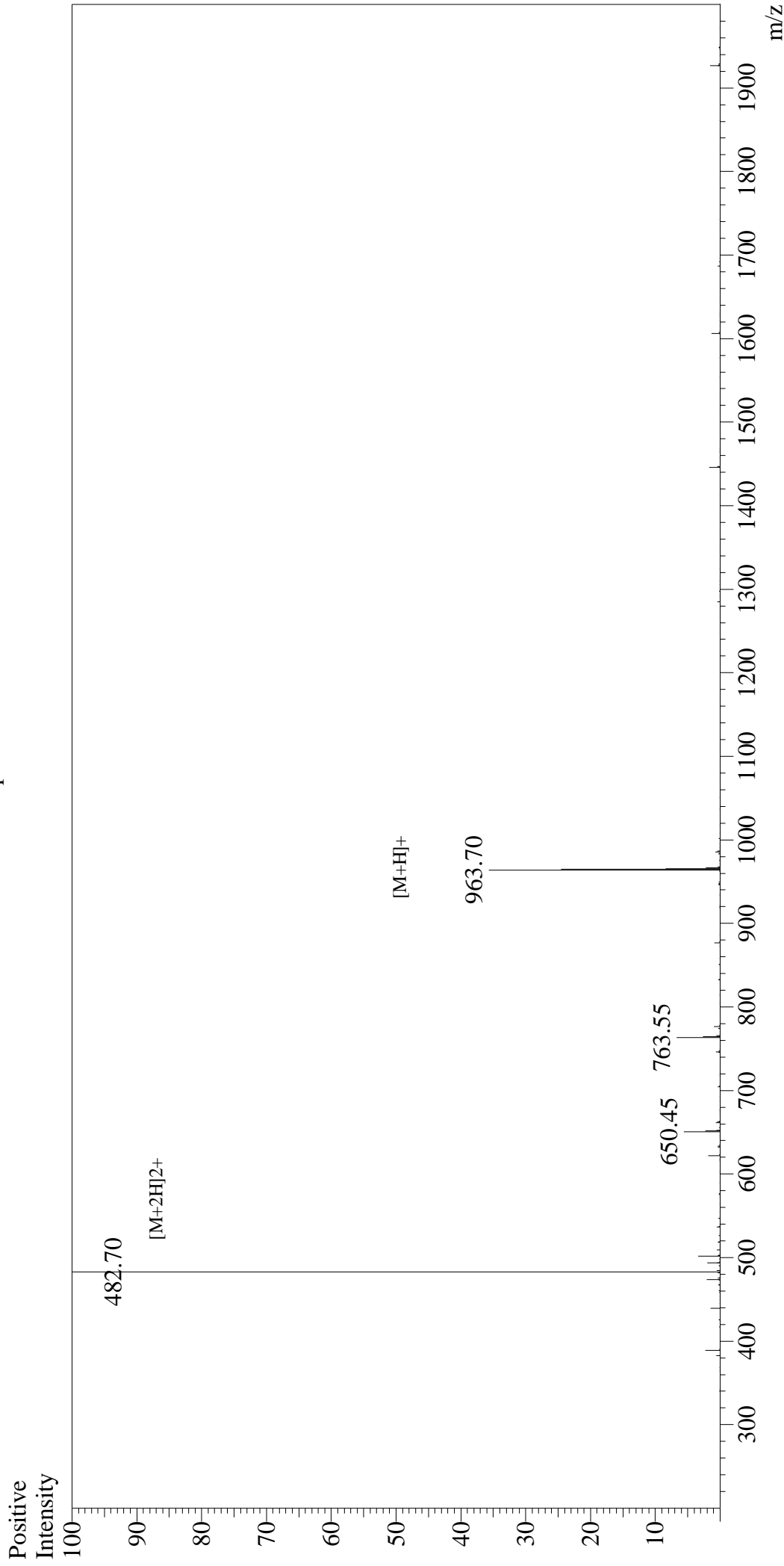


# Mass Spectrum



## Sample Information

User : Gary  
Month-Day Processed : 12/06/17  
Time Processed : 10:49:11  
Injection Volume : 0.2  
Sample Name : OVA Peptide (257-264)  
Cat No. : RPI0611  
Lot No. : PE6601706  
Theoretical MW : 963.13  
Observed MW : 963.40

Interface : ESI  
Nebulizing Gas Flow : 1.5L/min  
CDL Temp : 250°C  
Block Temp : 200°C

Interface Bias : +4.5kV  
Drying Gas Flow : 5 L/min  
T.Flow : 0.2ml/min  
B.conc : 50%H2O/50%MeOH