

Sample Name :Luteinizing Hormone Releasing Hormone (LH-RH), human  
 Cat No.: RP11937  
 Lot No.: E7160220L  
 Time Processed :23:17:46  
 Month-Day-Year Processed :12/26/2020

Pump A : 0.065% trifluoroacetic in 100% water (v/v)  
 Pump B : 0.05% trifluoroacetic in 100% acetonitrile (v/v)  
 Total Flow:1 ml/min  
 Wavelength:220 nm

<<LC Time Program>>

Time	Module	Command	Value
0.01	Pumps	Solvent B Conc.	5
25.00	Pumps	Solvent B Conc.	65
25.01	Pumps	Solvent B Conc.	95
27.00	Pumps	Solvent B Conc.	95
27.01	Pumps	Solvent B Conc.	5
35.00	Pumps	Solvent B Conc.	5
35.01	Controller	Stop	

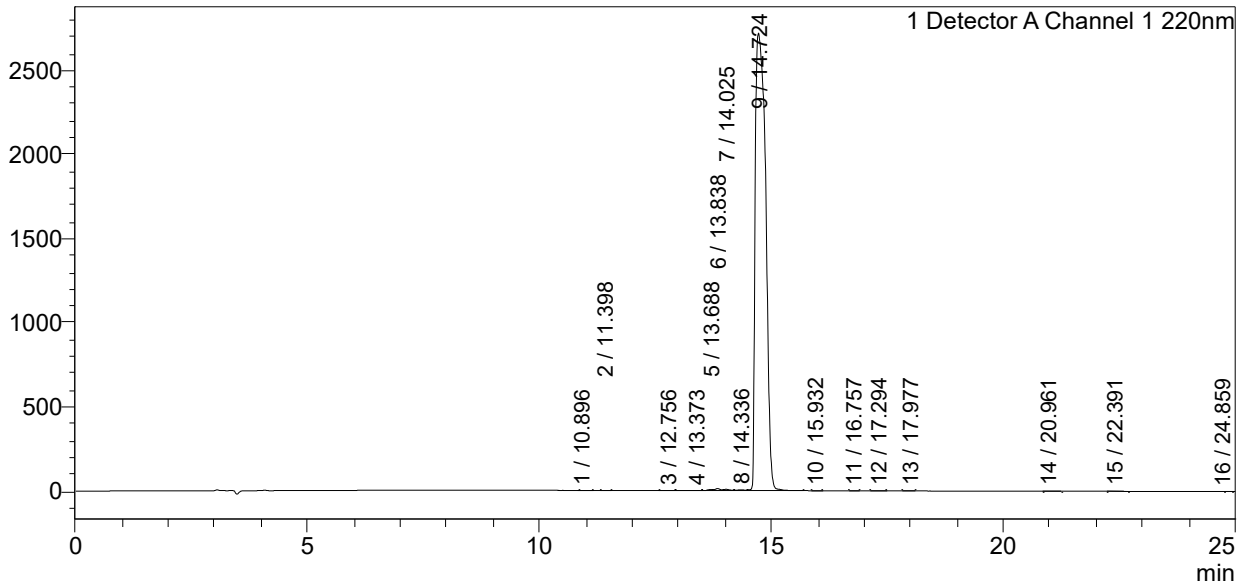
<<Column Performance>>

<Detector A>

Column : Inertsil ODS-3 4.6 x 250 mm  
 Equipment:ZJ19010014

<Chromatogram>

mV



<Peak Table>

Detector A Channel 1 220nm

Peak#	Ret. Time	Area	Height	Area%
1	10.896	1332	125	0.003
2	11.398	1637	209	0.004
3	12.756	5083	707	0.012
4	13.373	17952	1063	0.042
5	13.688	47261	5758	0.111
6	13.838	93027	11967	0.218
7	14.025	73280	7511	0.172
8	14.336	58569	5189	0.137
9	14.724	42281770	2718982	99.252
10	15.932	1746	234	0.004
11	16.757	1550	198	0.004
12	17.294	6565	786	0.015
13	17.977	1789	225	0.004
14	20.961	2786	323	0.007
15	22.391	4823	352	0.011

Peak#	Ret. Time	Area	Height	Area%
16	24.859	1418	248	0.003
Total		42600587	2753878	100.000