

Sample Name :PACAP (1-38), human, ovine, rat  
 Cat. No. : RP10335  
 Lot. No. : PE6741808

Pump A : 0.065% trifluoroacetic in 100% water (v/v)  
 Pump B : 0.05% trifluoroacetic in 100% acetonitrile (v/v)  
 Total Flow:1 ml/min  
 Wavelength:220 nm

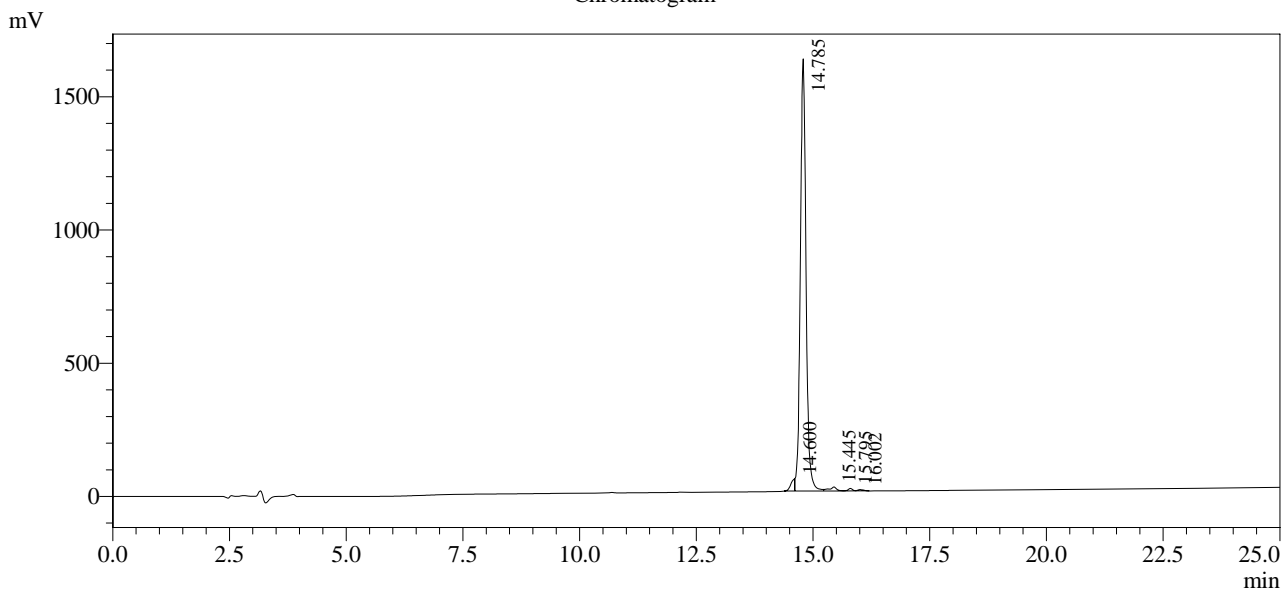
| Time  | Unit       | Command       | Value | Comment |
|-------|------------|---------------|-------|---------|
| 0.01  | Pumps      | Pump A B.Conc | 5     |         |
| 25.00 | Pumps      | Pump A B.Conc | 65    |         |
| 25.01 | Pumps      | Pump A B.Conc | 95    |         |
| 31.00 | Pumps      | Pump A B.Conc | 95    |         |
| 31.01 | Pumps      | Pump A B.Conc | 5     |         |
| 40.00 | Pumps      | Pump A B.Conc | 5     |         |
| 40.01 | Controller | Stop          |       |         |

<<Column Performance>>

<Detector A>

Column : Inertsil ODS-3 4.6 x 250 mm

Chromatogram



1 Det.A Ch1 / 220nm

Peak Table

Detector A Ch1 220nm

| Peak# | Ret. Time | Area     | Height  | Area %  |
|-------|-----------|----------|---------|---------|
| 1     | 14.600    | 267940   | 45079   | 1.880   |
| 2     | 14.785    | 13712511 | 1622089 | 96.206  |
| 3     | 15.445    | 168765   | 14884   | 1.184   |
| 4     | 15.795    | 64949    | 9212    | 0.456   |
| 5     | 16.002    | 39157    | 4707    | 0.275   |
| Total |           | 14253322 | 1695972 | 100.000 |