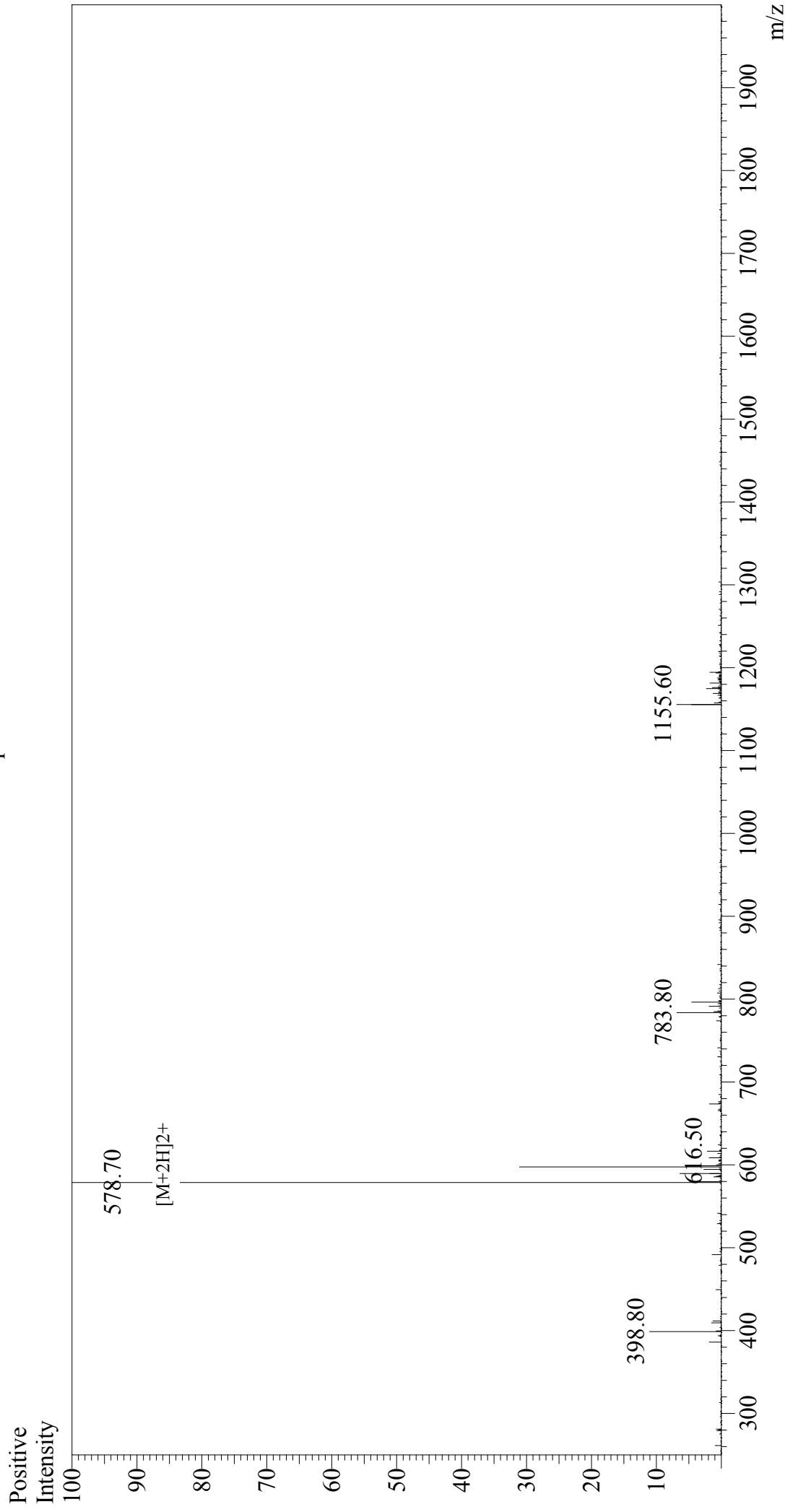


Mass Spectrum



Sample Information

Acquired by : Gary
Month-Day Processed : 12/16/17
Time Processed : 14:56:08
Injection Volume : 0.6
Sample Name : hgp100(25-33)
Cat. No. : RP20344
Lot. No. : PE6561712
Theoretical MW : 1155.30
Observed MW : 1155.40

Interface : ESI
Nebulizing Gas Flow : 1.5L/min
CDL Temp : 250°C
Block Temp : 200°C

Interface Bias : +4.5 kV
Drying Gas Flow : 5 L/min
T.Flow : 0.2 ml/min
B.conc : 50%H2O/50%MeOH