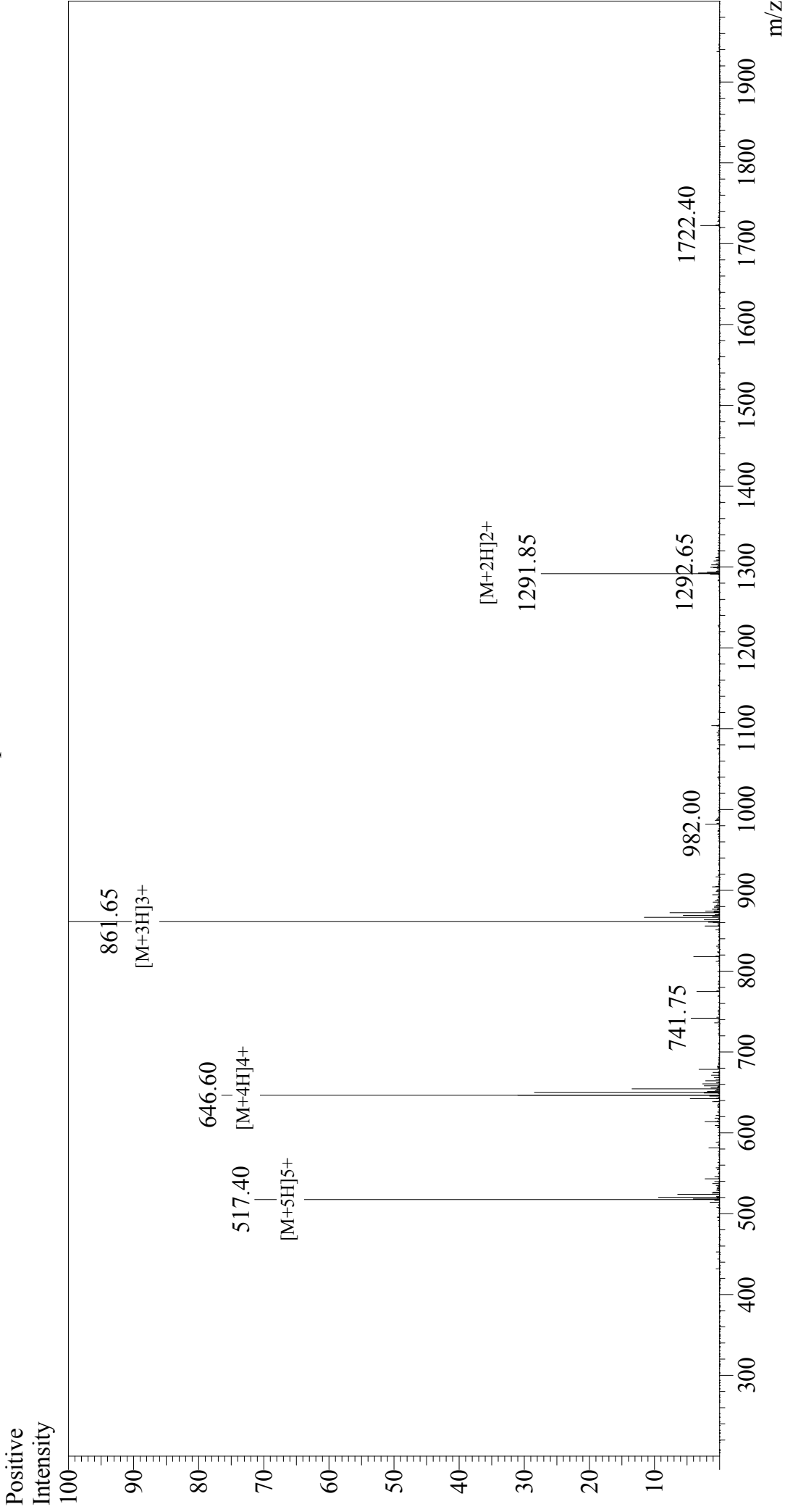


Mass Spectrum



Interface : ESI
 Nebulizing Gas Flow : 1.5L/min
 CDL Temp : 250°C
 Block Temp : 200°C
 Interface Bias : +4.5 kV
 Drying Gas Flow : 5 L/min
 T.Flow : 0.2 ml/min
 B.conc : 50% H₂O/50% MeOH

Sample Information
 Acquired by : Gary
 Month-Day Processed : 10/19/17
 Time Processed : 17:09:17
 Injection Volume : 0.2
 Sample Name : MOG(35-55)
 Cat. No. : RP10245
 Lot. No. : PE6831710
 Theoretical MW : 2581.98
 Observed MW : 2581.95