

Sample Name : Substance P
 Cat. No. : RP10178
 Lot. No. : PE8181902
 Time Processed : 11:21:34
 Month-Day-Year Processed : 03/04/2019

Pump A : 0.065% trifluoroacetic in 100% water (v/v)
 Pump B : 0.05% trifluoroacetic in 100% acetonitrile (v/v)
 Total Flow:1 ml/min
 Wavelength:220 nm

| Time | Unit | Command | Value | Comment |
|-------|------------|--------------|-------|---------|
| 0.01 | Pumps | Pump B Conc. | 5 | |
| 25.00 | Pumps | Pump B Conc. | 65 | |
| 25.01 | Pumps | Pump B Conc. | 95 | |
| 31.00 | Pumps | Pump B Conc. | 95 | |
| 31.01 | Pumps | Pump B Conc. | 5 | |
| 40.00 | Pumps | Pump B Conc. | 5 | |
| 40.01 | Controller | Stop | | |

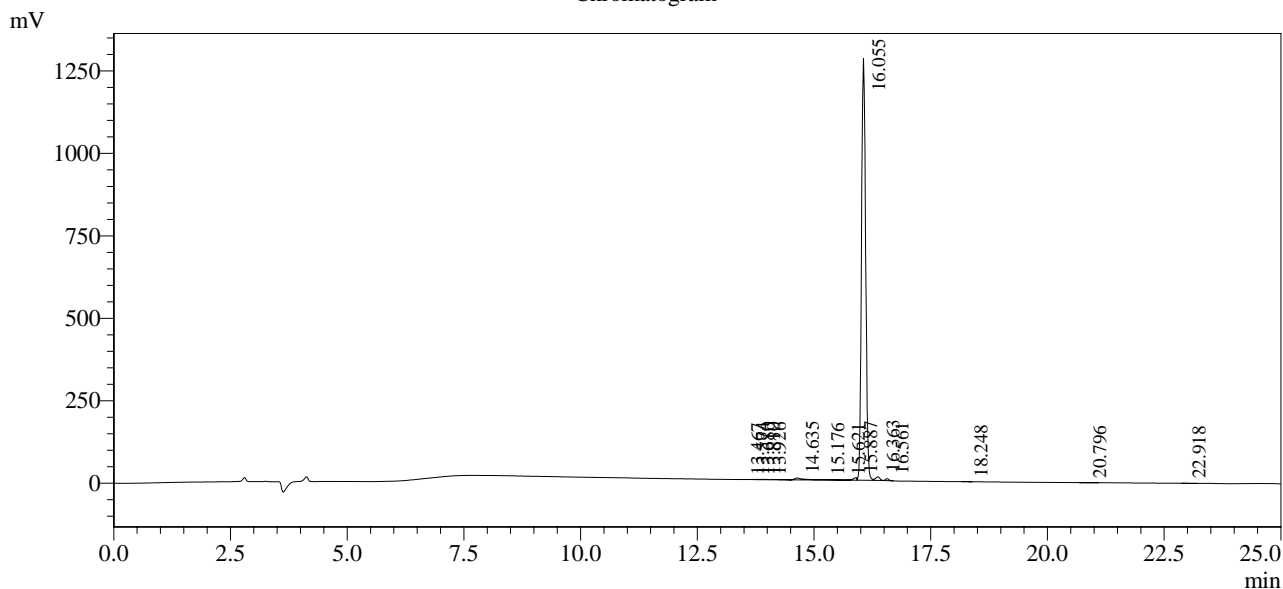
<<Column Performance>>

<Detector A>

Column :Inertsil ODS-3 4.6 x 250 mm

Equipment: SS-CM-0309

Chromatogram



1 Det.A Ch1 / 220nm

Peak Table

Detector A Ch1 220nm

| Peak# | Ret. Time | Area | Height | Area % |
|-------|-----------|---------|---------|---------|
| 1 | 13.467 | 1248 | 219 | 0.015 |
| 2 | 13.574 | 2761 | 420 | 0.034 |
| 3 | 13.680 | 4878 | 588 | 0.059 |
| 4 | 13.810 | 3362 | 684 | 0.041 |
| 5 | 13.926 | 18851 | 839 | 0.229 |
| 6 | 14.635 | 78921 | 5341 | 0.959 |
| 7 | 15.176 | 11194 | 1288 | 0.136 |
| 8 | 15.621 | 5846 | 937 | 0.071 |
| 9 | 15.887 | 47893 | 7494 | 0.582 |
| 10 | 16.055 | 7952813 | 1279564 | 96.648 |
| 11 | 16.363 | 67696 | 10754 | 0.823 |
| 12 | 16.561 | 28581 | 5622 | 0.347 |
| 13 | 18.248 | 1569 | 228 | 0.019 |
| 14 | 20.796 | 1665 | 149 | 0.020 |
| 15 | 22.918 | 1390 | 137 | 0.017 |
| Total | | 8228668 | 1314264 | 100.000 |