

Sample Name :mTRP-2(180-188)
 Cat. No. : RP20250
 Lot. No. : PE6761807

Pump A : 0.065% trifluoroacetic in 100% water (v/v)
 Pump B : 0.05% trifluoroacetic in 100% acetonitrile (v/v)
 Total Flow:1 ml/min
 Wavelength:220 nm

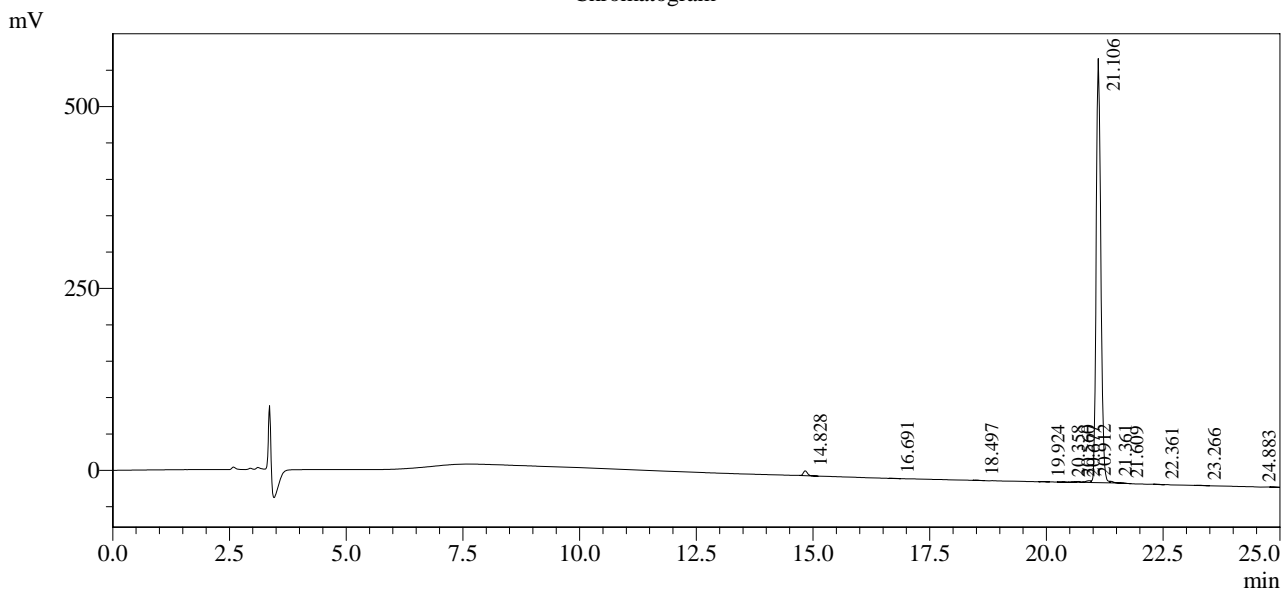
| Time | Unit | Command | Value | Comment |
|-------|------------|---------------|-------|---------|
| 0.01 | Pumps | Pump A B.Conc | 5 | |
| 10.00 | Pumps | Pump A B.Conc | 35 | |
| 35.00 | Pumps | Pump A B.Conc | 95 | |
| 41.00 | Pumps | Pump A B.Conc | 95 | |
| 41.01 | Pumps | Pump A B.Conc | 5 | |
| 50.00 | Pumps | Pump A B.Conc | 5 | |
| 51.00 | Controller | Stop | | |

<<Column Performance>>

<Detector A>

Column : Inertsil ODS-3 4.6 x 250 mm

Chromatogram



1 Det.A Ch1 / 220nm
 Detector A Ch1 220nm

| Peak# | Ret. Time | Area | Height | Area % |
|-------|-----------|---------|--------|---------|
| 1 | 14.828 | 40616 | 6681 | 0.981 |
| 2 | 16.691 | 1520 | 208 | 0.037 |
| 3 | 18.497 | 2538 | 417 | 0.061 |
| 4 | 19.924 | 2859 | 483 | 0.069 |
| 5 | 20.358 | 2477 | 368 | 0.060 |
| 6 | 20.560 | 2926 | 552 | 0.071 |
| 7 | 20.677 | 6196 | 1089 | 0.150 |
| 8 | 20.912 | 16760 | 2351 | 0.405 |
| 9 | 21.106 | 4042307 | 582905 | 97.649 |
| 10 | 21.361 | 10361 | 2117 | 0.250 |
| 11 | 21.609 | 1544 | 170 | 0.037 |
| 12 | 22.361 | 2691 | 476 | 0.065 |
| 13 | 23.266 | 3708 | 446 | 0.090 |
| 14 | 24.883 | 3119 | 434 | 0.075 |
| Total | | 4139622 | 598699 | 100.000 |