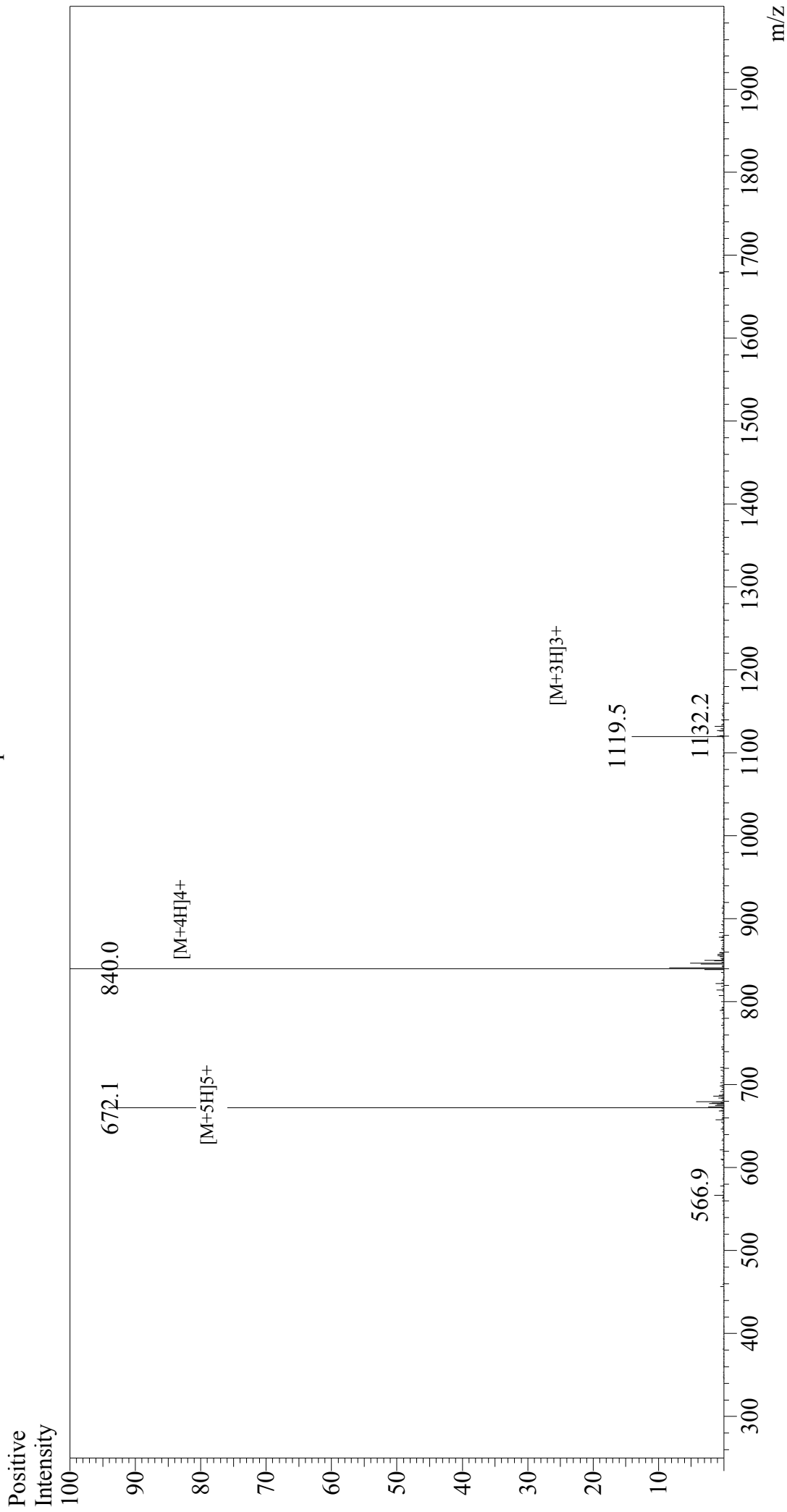


Mass Spectrum



Sample Information

Acquired by : Gary
Month-Day Processed : 08/07/18
Time Processed : 18:10:29
Injection Volume : 0.2
Sample Name : Glucagon-Like Peptide (GLP) I (7-37)
Cat. No. : RP12738
Lot. No. : PE8361807
Theoretical MW : 3355.68
Observed MW : 3356.0

Interface : ESI
Nebulizing Gas Flow : 1.5L/min
CDL Temp : 250°C
Block Temp : 200°C

Interface Bias : +4.5 kV
Drying Gas Flow : 5 L/min
T.Flow : 0.2 ml/min
B.conc : 50% H₂O/50% MeOH