

Sample Name :hgp100(25-33)
 Cat. No. : RP20344
 Lot. No. : E1187719F
 Time Processed :8:00:20
 Month-Day-Year Processed :06/14/2019
 Pump A : 0.065% trifluoroacetic in 100% water (v/v)
 Pump B : 0.05% trifluoroacetic in 100% acetonitrile (v/v)
 Total Flow:1 ml/min
 Wavelength:220 nm

<<LC Time Program>>

| Time | Module | Command | Value |
|-------|------------|-----------------|-------|
| 0.01 | Pumps | Solvent B Conc. | 5 |
| 25.00 | Pumps | Solvent B Conc. | 65 |
| 25.01 | Pumps | Solvent B Conc. | 95 |
| 27.00 | Pumps | Solvent B Conc. | 95 |
| 27.01 | Pumps | Solvent B Conc. | 5 |
| 33.00 | Pumps | Solvent B Conc. | 5 |
| 33.01 | Controller | Stop | |

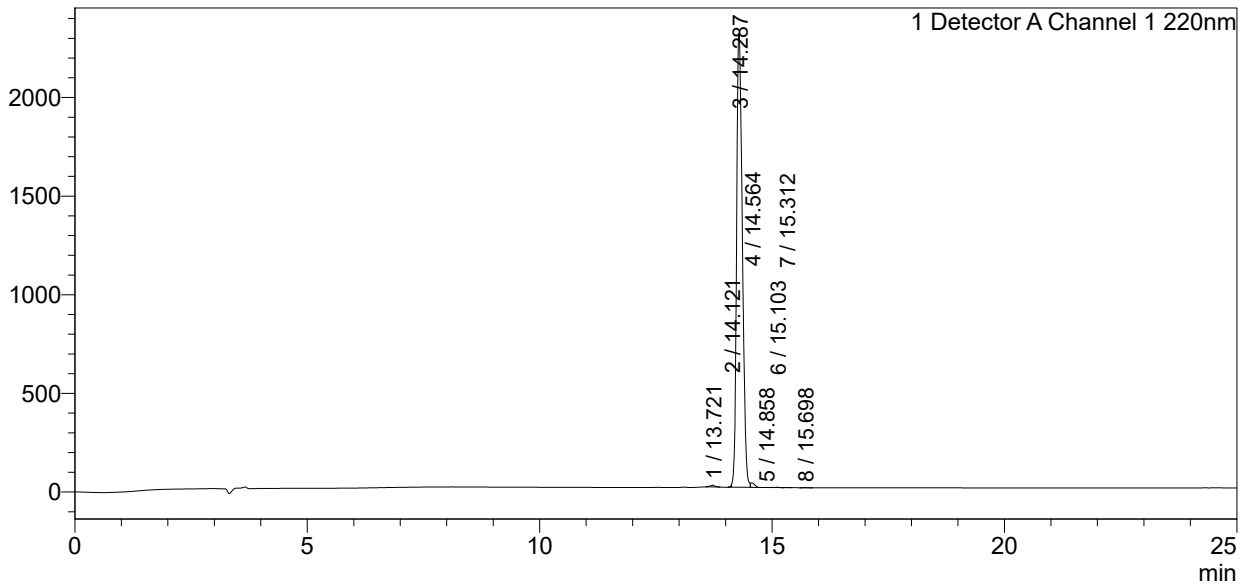
<<Column Performance>>

<Detector A>

Column :Inertsil ODS-3 4.6 x 250 mm
 Equipment: ZJ17010508

<Chromatogram>

mV



<Peak Table>

Detector A Channel 1 220nm

| Peak# | Ret. Time | Area | Height | Area% |
|-------|-----------|----------|---------|---------|
| 1 | 13.721 | 62215 | 8974 | 0.311 |
| 2 | 14.121 | 15867 | 7564 | 0.079 |
| 3 | 14.287 | 19802208 | 2299890 | 98.847 |
| 4 | 14.564 | 134022 | 22247 | 0.669 |
| 5 | 14.858 | 2113 | 439 | 0.011 |
| 6 | 15.103 | 9014 | 1731 | 0.045 |
| 7 | 15.312 | 4158 | 810 | 0.021 |
| 8 | 15.698 | 3569 | 511 | 0.018 |
| Total | | 20033164 | 2342168 | 100.000 |