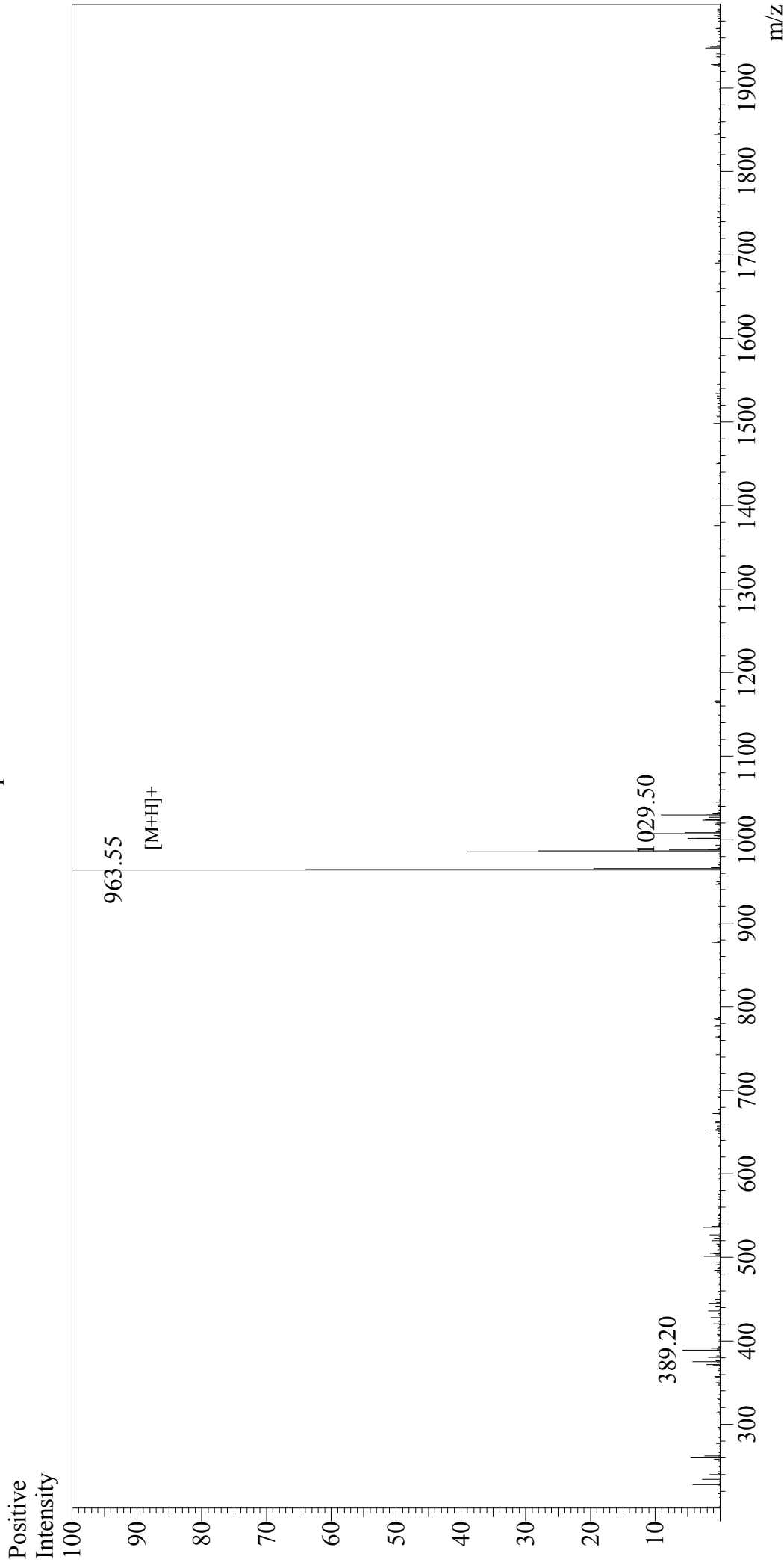


# Mass Spectrum



## Sample Information

User : Gary  
Month-Day Processed : 09/23/16  
Time Processed : 14:45:08  
Injection Volume : 0.2  
Sample Name : OVA Peptide (257-264)  
Cat No. : RP10611  
Lot No. : PE8781609  
Theoretical MW : 963.13  
Observed MW : 962.55

Interface : ESI  
Nebulizing Gas Flow : 1.5L/min  
CDL Temp : 250°C  
Block Temp : 200°C

Interface Bias : +4.5kV  
Drying Gas Flow : 5 L/min  
T.Flow : 0.2ml/min  
B.conc : 50%H2O/50%MeOH