

Sample Name : β -Amyloid (1-40)
 Cat No. : RP10004
 Lot No. : PE0671902
 Time Processed : 8:58:02
 Month-Day-Year Processed : 03/04/2019
 Pump A : 0.065% trifluoroacetic in 100% water (v/v)
 Pump B : 0.05% trifluoroacetic in 100% acetonitrile (v/v)
 Total Flow: 1 ml/min
 Wavelength: 220 nm

| Time | Unit | Command | Value | Comment |
|-------|------------|--------------|-------|---------|
| 0.01 | Pumps | Pump B Conc. | 15 | |
| 25.00 | Pumps | Pump B Conc. | 75 | |
| 25.01 | Pumps | Pump B Conc. | 95 | |
| 31.00 | Pumps | Pump B Conc. | 95 | |
| 31.01 | Pumps | Pump B Conc. | 15 | |
| 37.00 | Pumps | Pump B Conc. | 15 | |
| 37.01 | Controller | Stop | | |

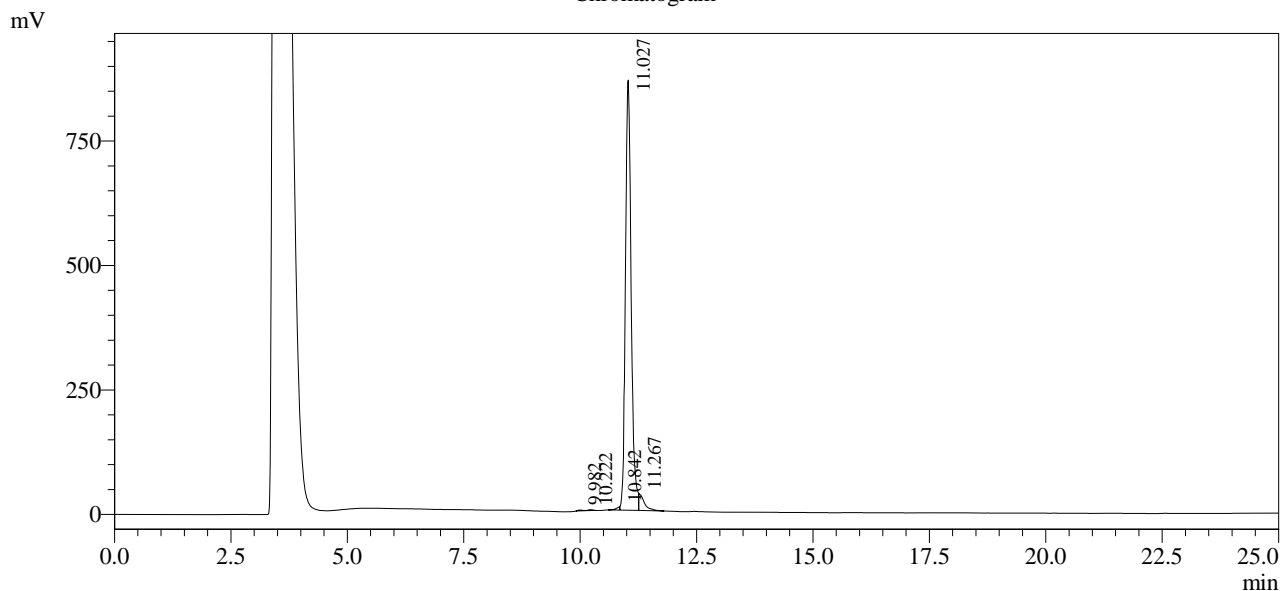
<<Column Performance>>

<Detector A>

Column : AlltimaTM C18 4.6 x 250 mm

Equipment: GR09010180

Chromatogram



1 Det.A Ch1 / 220nm

Peak Table

Detector A Ch1 220nm

| Peak# | Ret. Time | Area | Height | Area % |
|-------|-----------|---------|--------|---------|
| 1 | 9.982 | 14232 | 1891 | 0.184 |
| 2 | 10.222 | 14210 | 1893 | 0.184 |
| 3 | 10.842 | 33766 | 6547 | 0.436 |
| 4 | 11.027 | 7410296 | 864347 | 95.703 |
| 5 | 11.267 | 270487 | 33364 | 3.493 |
| Total | | 7742991 | 908043 | 100.000 |