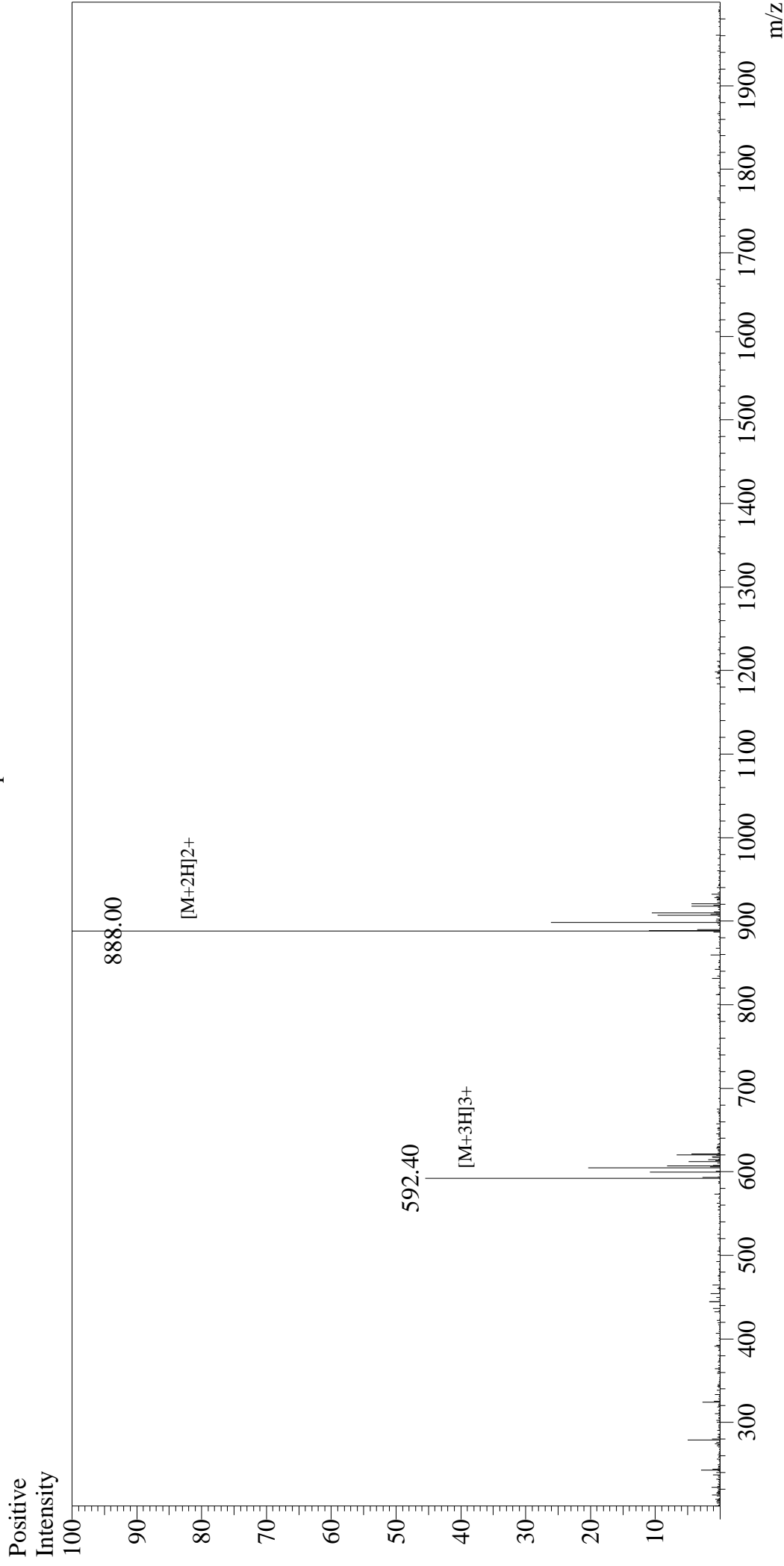


Mass Spectrum



Sample Information

User : Gary
Month-Day Processed : 02/04/17
Time Processed : 15:27:16
Injection Volume : 0.2
Sample Name : OVA Peptide (323-339)
Cat No. : RPI0610
Lot No. : PE2071702
Theoretical MW : 1773.91
Observed MW : 1774.00

Interface : ESI
Nebulizing Gas Flow : 1.5L/min
CDL Temp : 250°C
Block Temp : 200°C

Interface Bias : +4.5kV
Drying Gas Flow : 5 L/min
T.Flow : 0.2ml/min
B.conc : 50%H2O/50%MeOH