

Sample Name: Gastric Inhibitory Peptide (GIP), human  
 Cat No. : RP10795  
 Lot No. : E3426520B  
 Time Processed: 3:45:52 PM  
 Month-Day-Year Processed :02/11/2020

Pump A : 0.065% trifluoroacetic in 100% water (v/v)  
 Pump B : 0.05% trifluoroacetic in 100% acetonitrile (v/v)  
 Total Flow: 1 ml/min  
 Wavelength: 220 nm

<<LC Time Program>>

Time	Module	Command	Value
0.01	Pumps	Pump A B.Conc	5
25.00	Pumps	Pump A B.Conc	65
30.01	Pumps	Pump A B.Conc	95
31.00	Pumps	Pump A B.Conc	95
31.01	Pumps	Pump A B.Conc	15
40.00	Pumps	Pump A B.Conc	15
40.01	Controller	Stop	

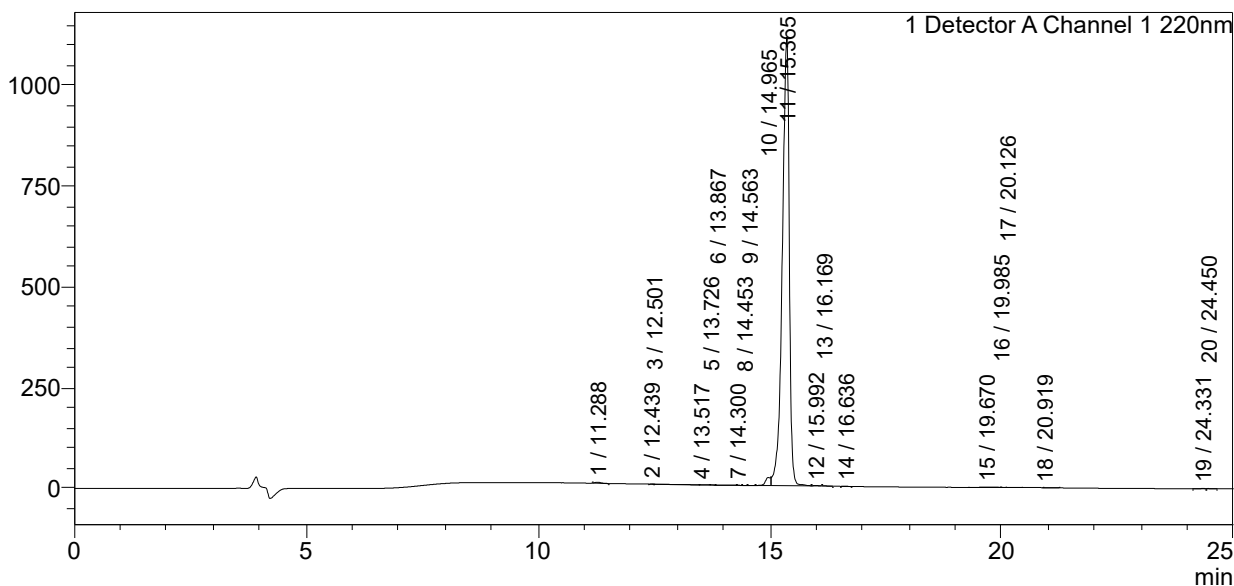
<<Column Performance>>

<Detector A>

Column : Alltima™ C18 4.6 x 250 mm  
 Equipment: ZJ19010325

<Chromatogram>

mV



<Peak Table>

Detector A Channel 1 220nm

Peak#	Ret. Time	Area	Height	Area%
1	11.288	20494	2475	0.172
2	12.439	303	81	0.003
3	12.501	742	198	0.006
4	13.517	773	118	0.006
5	13.726	535	118	0.004
6	13.867	865	54	0.007
7	14.300	267	73	0.002
8	14.453	114	37	0.001
9	14.563	764	96	0.006
10	14.965	136505	20169	1.147
11	15.365	11702264	1113065	98.308
12	15.992	4952	935	0.042
13	16.169	1158	208	0.010
14	16.636	3667	557	0.031

Peak#	Ret. Time	Area	Height	Area%
15	19.670	11537	461	0.097
16	19.985	2586	355	0.022
17	20.126	2711	285	0.023
18	20.919	3030	112	0.025
19	24.331	5966	501	0.050
20	24.450	4421	487	0.037
Total		11903654	1140383	100.000