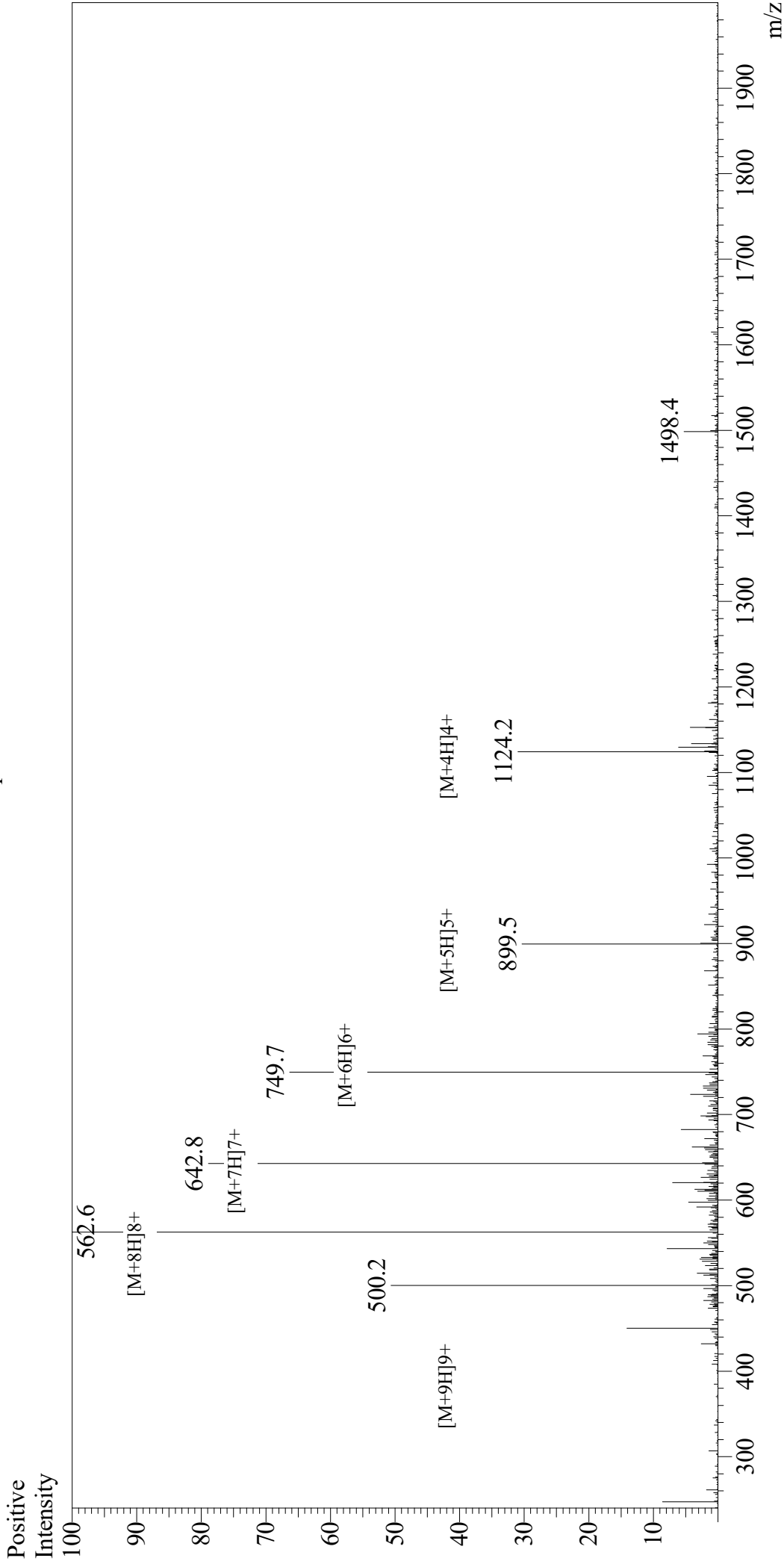


Mass Spectrum



Sample Information	Equipment	: GK11010007
User :	Interface Bias	: +4.5kV
Month-Day Processed :	Drying Gas Flow	: 5 L/min
Time Processed :	T.Flow	: 0.2ml/min
Injection Volume :	B.conc	: 50%H ₂ O/50%MeOH
Sample Name :	Interface	: ESI
Cat No. :	Nebulizing Gas Flow	: 1.5L/min
LL-37, scrambled	CDL Temp	: 250
RP20332	Block Temp	: 200
E5616120E		
4493.30		
Theoretical MW :		
4992.8		
Observed MW :		