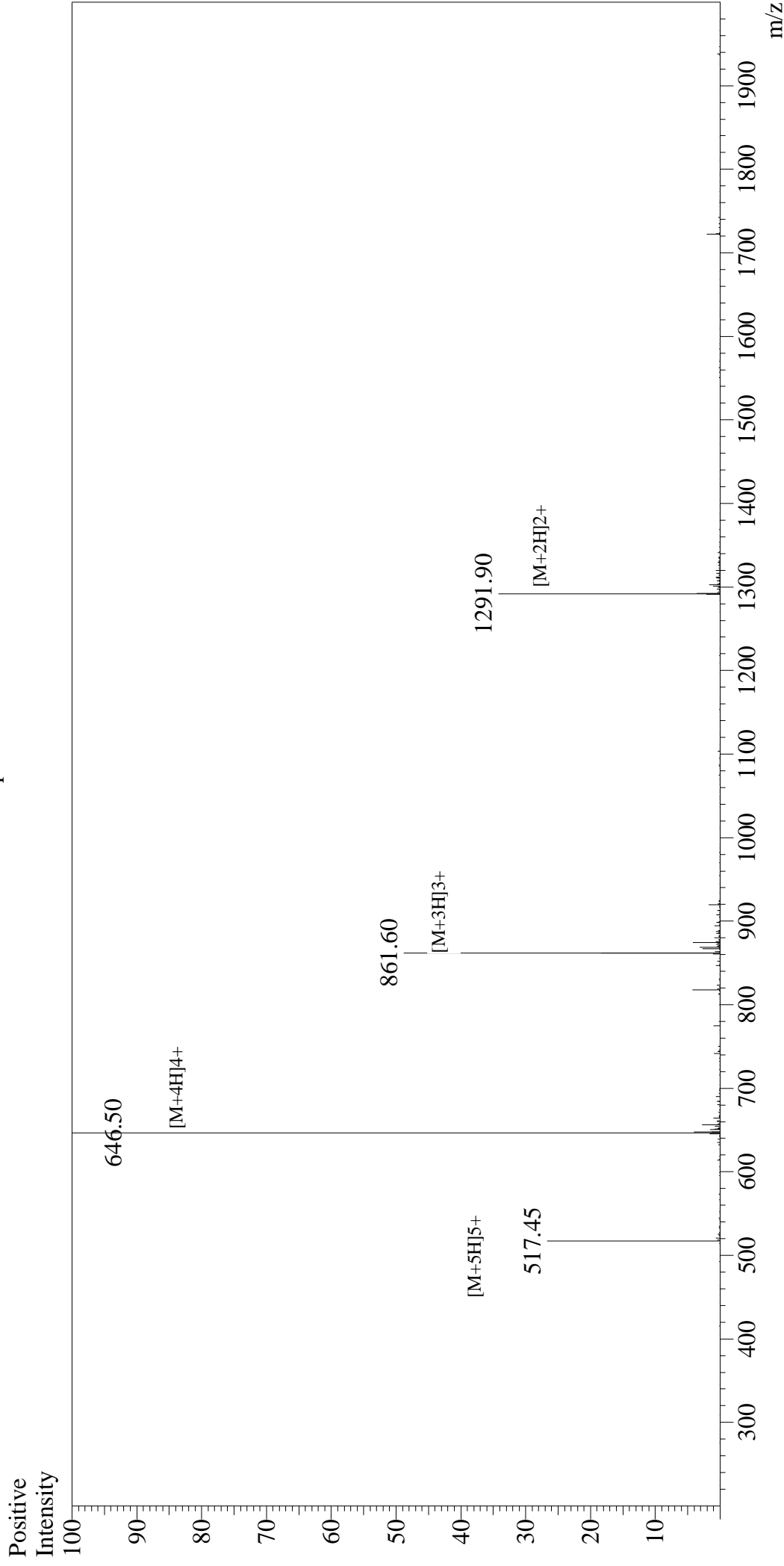


Mass Spectrum



Sample Information

User : Gary
Month-Day Processed : 11/17/16
Time Processed : 7:36:19
Injection Volume : 0.2
Sample Name : Myelin Oligodendrocyte Glycoprotein Peptide (35-55), mouse, rat
Cat No. : RPI0245
Lot No. : PE4781611
Theoretical MW : 2581.98
Observed MW : 2582.00

Interface : ESI
Nebulizing Gas Flow : 1.5L/min
CDL Temp : 250°C
Block Temp : 200°C

Interface Bias : +4.5kV
Drying Gas Flow : 5 L/min
T.Flow : 0.2ml/min
B.conc : 50%H2O/50%MeOH