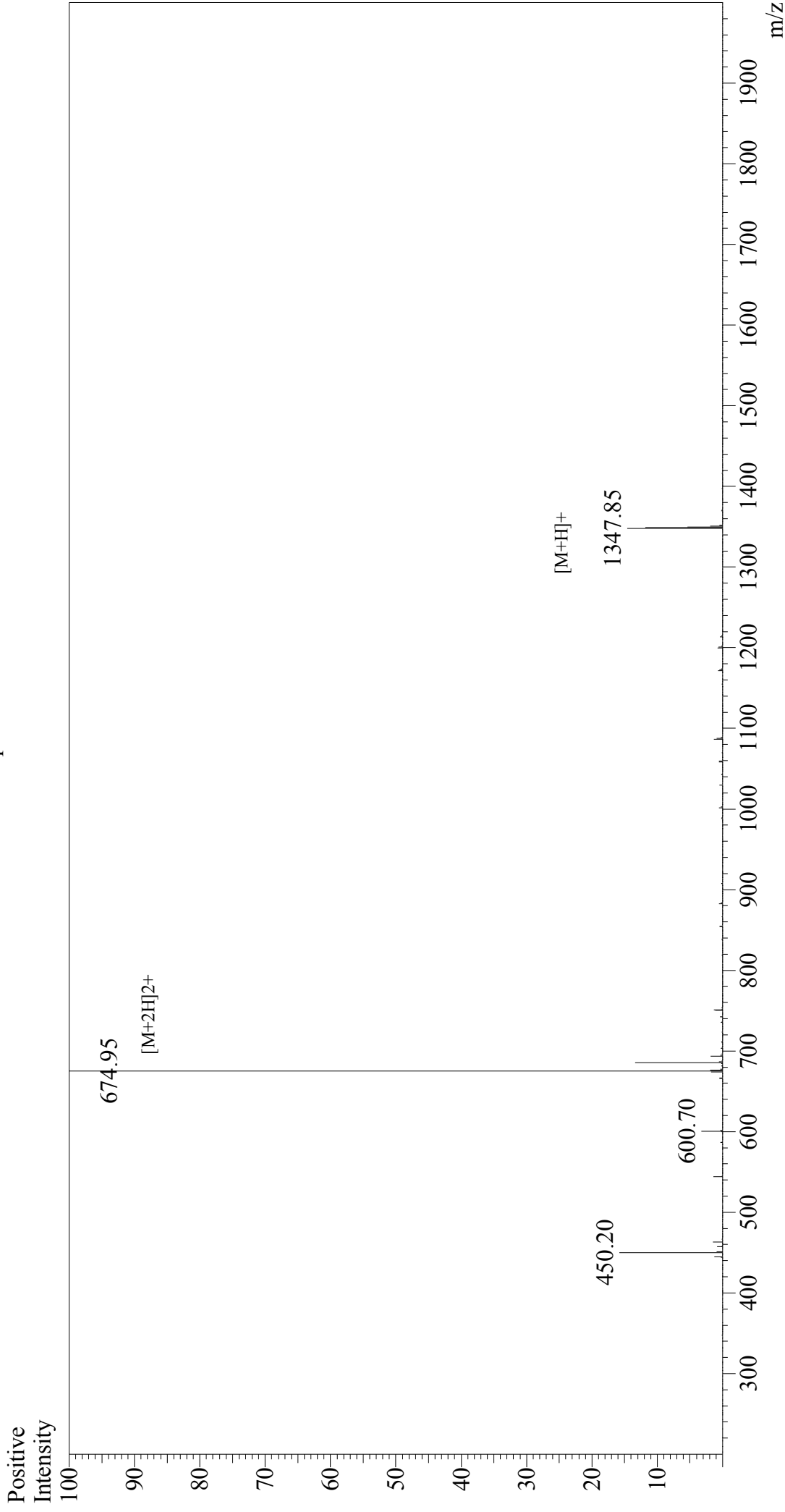


Mass Spectrum



Sample Information

Acquired by : Gary
Month-Day Processed : 03/09/17
Time Processed : 8:20:44
Injection Volume : 0.2
Sample Name : Substance P
Cat No.: RP10178
Lot No.: PES311703
Theoretical MW : 1347.63
Observed MW : 1347.90

Interface : ESI
Nebulizing Gas Flow : 1.5L/min
CDL Temp : 250°C
Block Temp : 200°C

Interface Bias : +4.5 kV
Drying Gas Flow : 5 L/min
T.Flow : 0.2 ml/min
B.conc : 50%H2O/50%MeOH