

Sample Name: Glucagon-Like Peptide (GLP) I (7-36), amide, human
 Cat No.: RP10773
 Lot No.: E5954720C
 Time Processed: 4:18:35 PM
 Month-Day-Year Processed : 03/27/2020

Pump A : 0.065% trifluoroacetic in 100% water (v/v)
 Pump B : 0.05% trifluoroacetic in 100% acetonitrile (v/v)
 Total Flow: 1 ml/min
 Wavelength: 220 nm

<<LC Time Program>>

Time	Module	Command	Value
0.01	Pumps	Pump A B.Conc	5
25.00	Pumps	Pump A B.Conc	65
25.01	Pumps	Pump A B.Conc	95
31.00	Pumps	Pump A B.Conc	95
31.01	Pumps	Pump A B.Conc	5
40.00	Pumps	Pump A B.Conc	5
40.00	Controller	Stop	

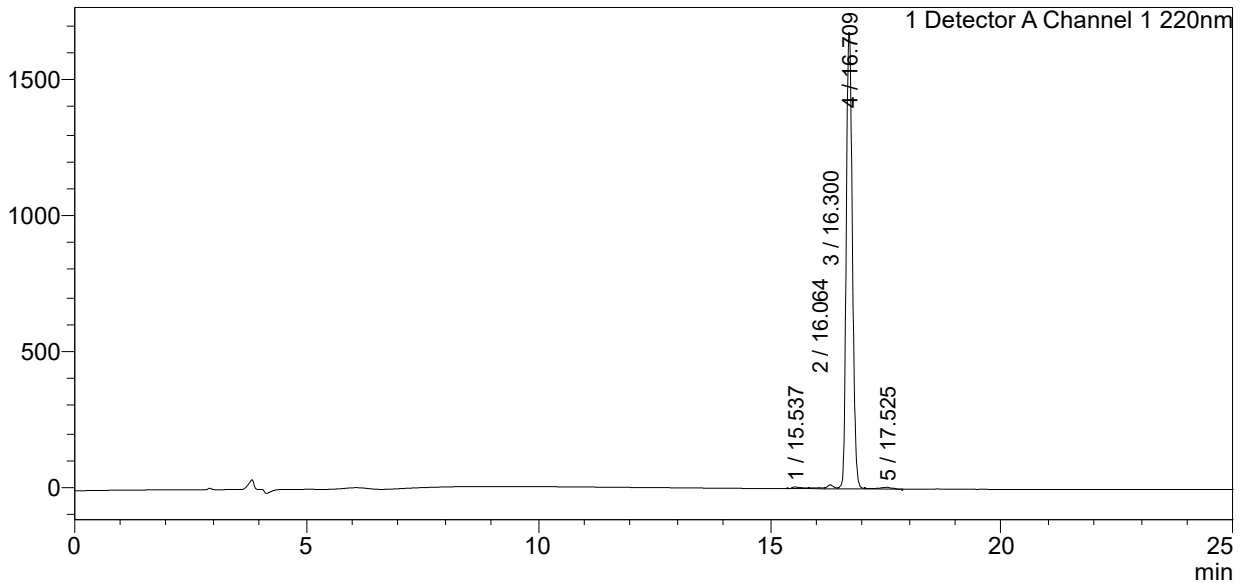
<<Column Performance>>

<Detector A>

Column : Alltima™ C18 4.6 x 250 mm
 Equipment: ZJ19010325

<Chromatogram>

mV



<Peak Table>

Detector A Channel 1 220nm

Peak#	Ret. Time	Area	Height	Area%
1	15.537	87600	5858	0.551
2	16.064	54300	3539	0.342
3	16.300	136091	14329	0.856
4	16.709	15482890	1680112	97.442
5	17.525	128425	6351	0.808
Total		15889306	1710188	100.000