

Sample Name : Glucagon-Like Peptide (GLP) I (7-36), amide, human
 Cat No.: RP10773
 Lot No.: E9624019L
 Time Processed : 4:13:23 PM
 Month-Day-Year Processed : 12/17/2019

Pump A : 0.065% trifluoroacetic in 100% water (v/v)
 Pump B : 0.05% trifluoroacetic in 100% acetonitrile (v/v)
 Total Flow: 1 ml/min
 Wavelength: 220 nm

<<LC Time Program>>

Time	Module	Command	Value
0.01	Pumps	Solvent B Conc.	5
25.00	Pumps	Solvent B Conc.	65
25.01	Pumps	Solvent B Conc.	95
31.00	Pumps	Solvent B Conc.	95
31.01	Pumps	Solvent B Conc.	5
40.00	Pumps	Solvent B Conc.	5
40.01	Controller	Stop	

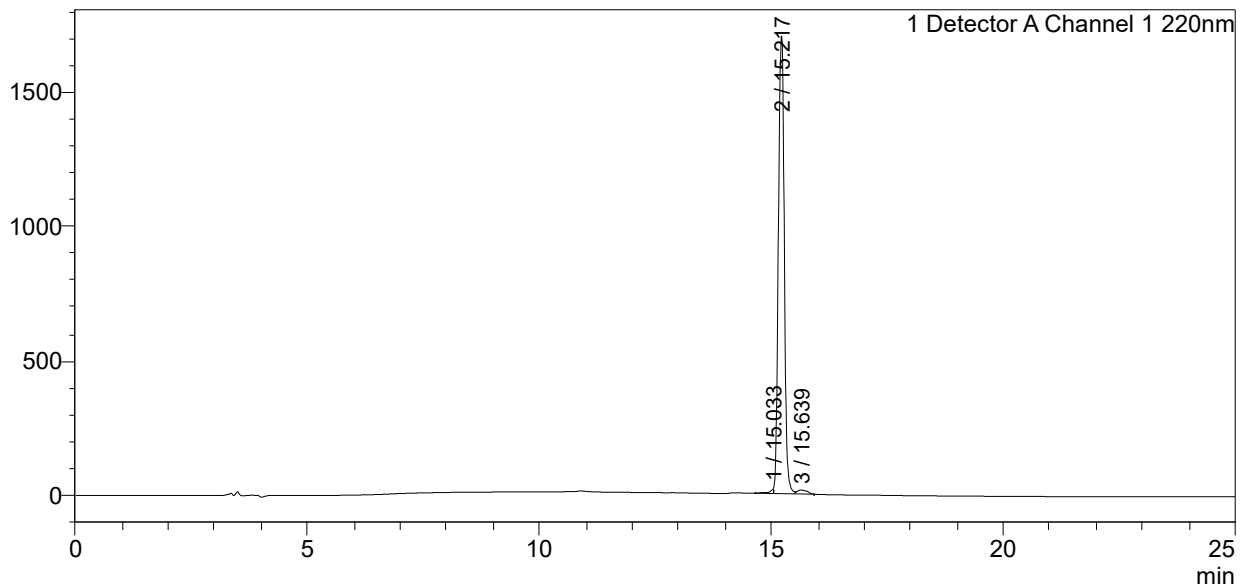
<<Column Performance>>

<Detector A>

Column : Inertsil ODS-3 4.6 x 250 mm
 Equipment: ZJ19010325

<Chromatogram>

mV



<Peak Table>

Detector A Channel 1 220nm

Peak#	Ret. Time	Area	Height	Area%
1	15.033	93929	15838	0.616
2	15.217	14916109	1702762	97.889
3	15.639	227816	14945	1.495
Total		15237854	1733544	100.000