

Sample Name :  $\beta$ -Amyloid (1-42), human  
 Cat. No. : RP10017  
 Lot. No.:PE7601809  
 Time Processed :14:56:05  
 Month-Day-Year Processed :11/06/2018

Pump A : 0.065% trifluoroacetic in 100% water (v/v)  
 Pump B : 0.05% trifluoroacetic in 100% acetonitrile (v/v)  
 Total Flow:1 ml/min  
 Wavelength:220 nm

| Time  | Unit       | Command      | Value | Comment |
|-------|------------|--------------|-------|---------|
| 0.01  | Pumps      | Pump B Conc. | 10    |         |
| 25.00 | Pumps      | Pump B Conc. | 100   |         |
| 25.01 | Pumps      | Pump B Conc. | 95    |         |
| 31.00 | Pumps      | Pump B Conc. | 95    |         |
| 31.01 | Pumps      | Pump B Conc. | 10    |         |
| 40.00 | Pumps      | Pump B Conc. | 10    |         |
| 40.01 | Controller | Stop         |       |         |

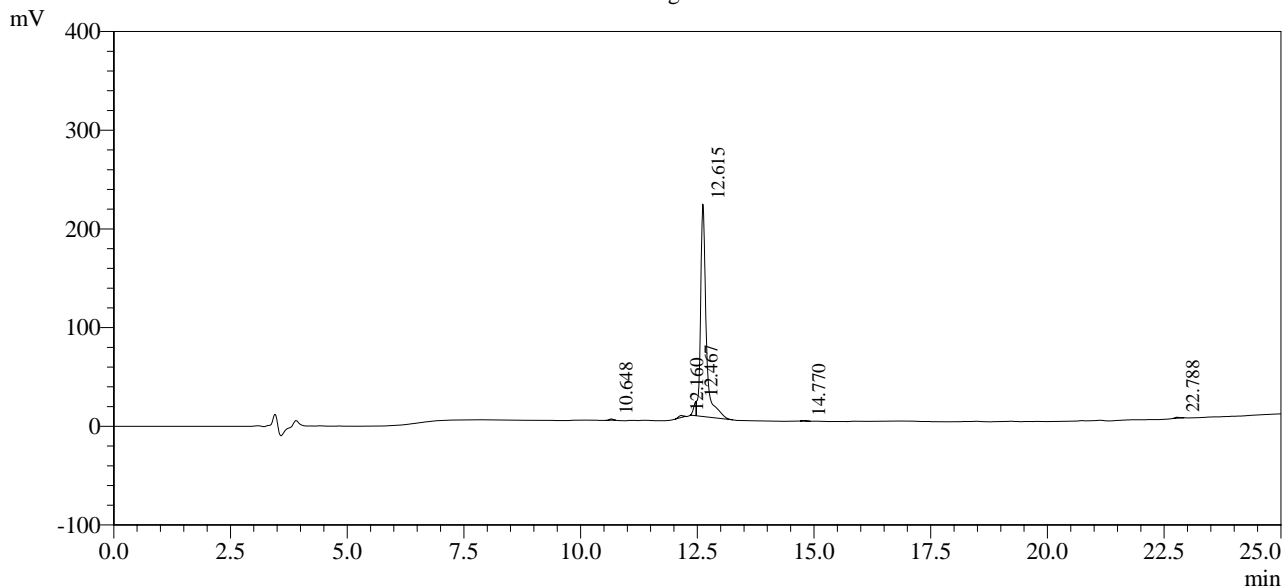
<<Column Performance>>

<Detector A>

Column : Inertsil ODS-3 4.6 x 250 mm

Equipment :SS-CM-0310

Chromatogram



1 Det.A Ch1 / 220nm

Peak Table

Detector A Ch1 220nm

| Peak# | Ret. Time | Area    | Height | Area %  |
|-------|-----------|---------|--------|---------|
| 1     | 10.648    | 7125    | 1349   | 0.376   |
| 2     | 12.160    | 15787   | 2099   | 0.834   |
| 3     | 12.467    | 55018   | 14394  | 2.907   |
| 4     | 12.615    | 1803649 | 215328 | 95.299  |
| 5     | 14.770    | 2658    | 449    | 0.140   |
| 6     | 22.788    | 8394    | 1125   | 0.444   |
| Total |           | 1892630 | 234744 | 100.000 |