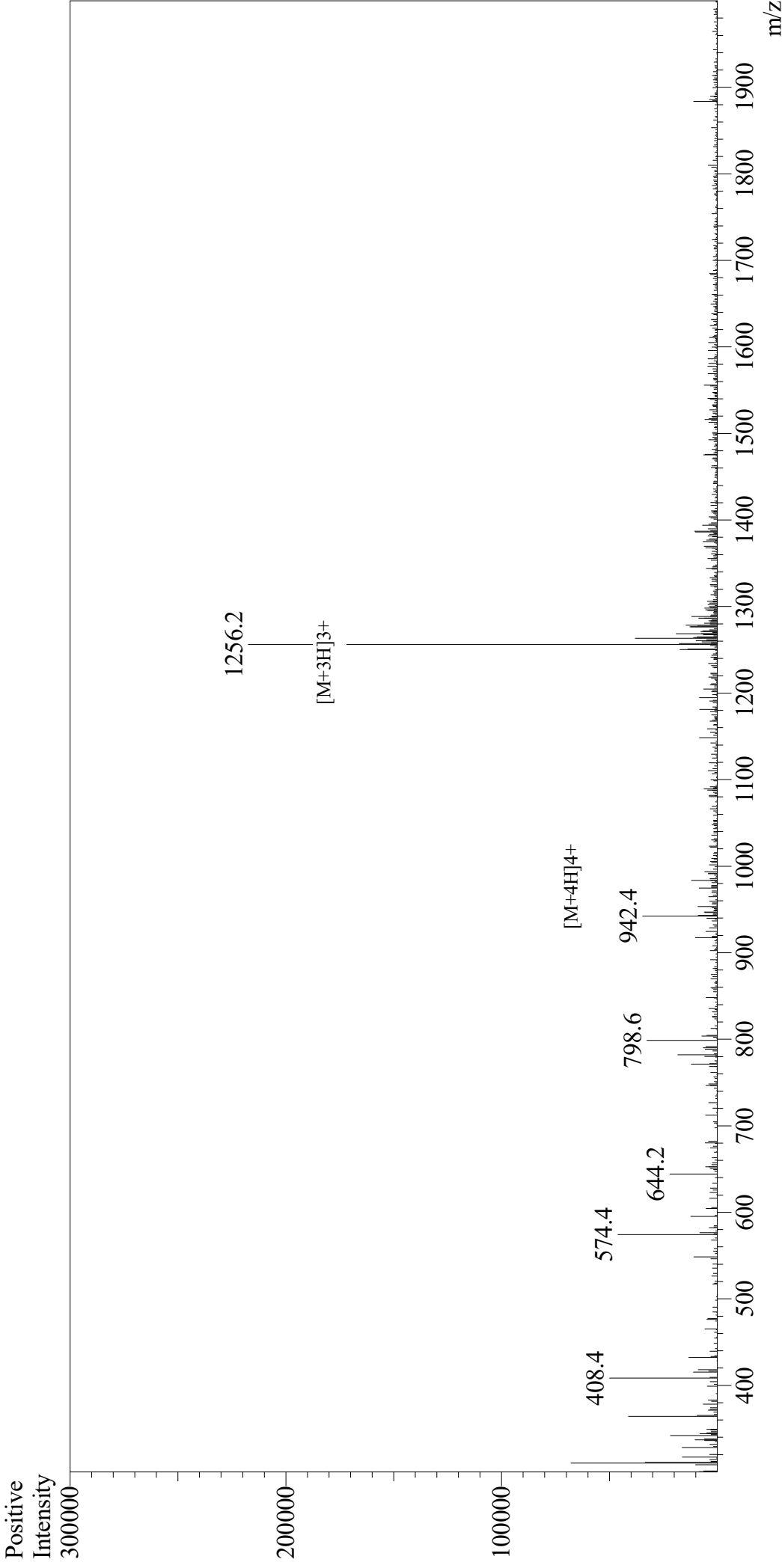


Mass Spectrum



Sample Information

User : Gary
Month-Day Processed : 08/17/19
Time Processed : 02:50:31 PM
Injection Volume : 0.8
Sample Name : Glucagon-Like Peptide (GLP) II, human
Cat No. : RP10769
Lot No. : E5443219H
Theoretical MW : 3766.20
Observed MW : 3765.6

Interface : ESI
Nebulizing Gas Flow : 1.5L/min
CDL Temp : 250
Block Temp : 200

Equipment : GK11010007
Interface Bias : +4.5kV
Drying Gas Flow : 5 L/min
T.Flow : 0.2ml/min
B.conc : 50%H2O/50%MeOH