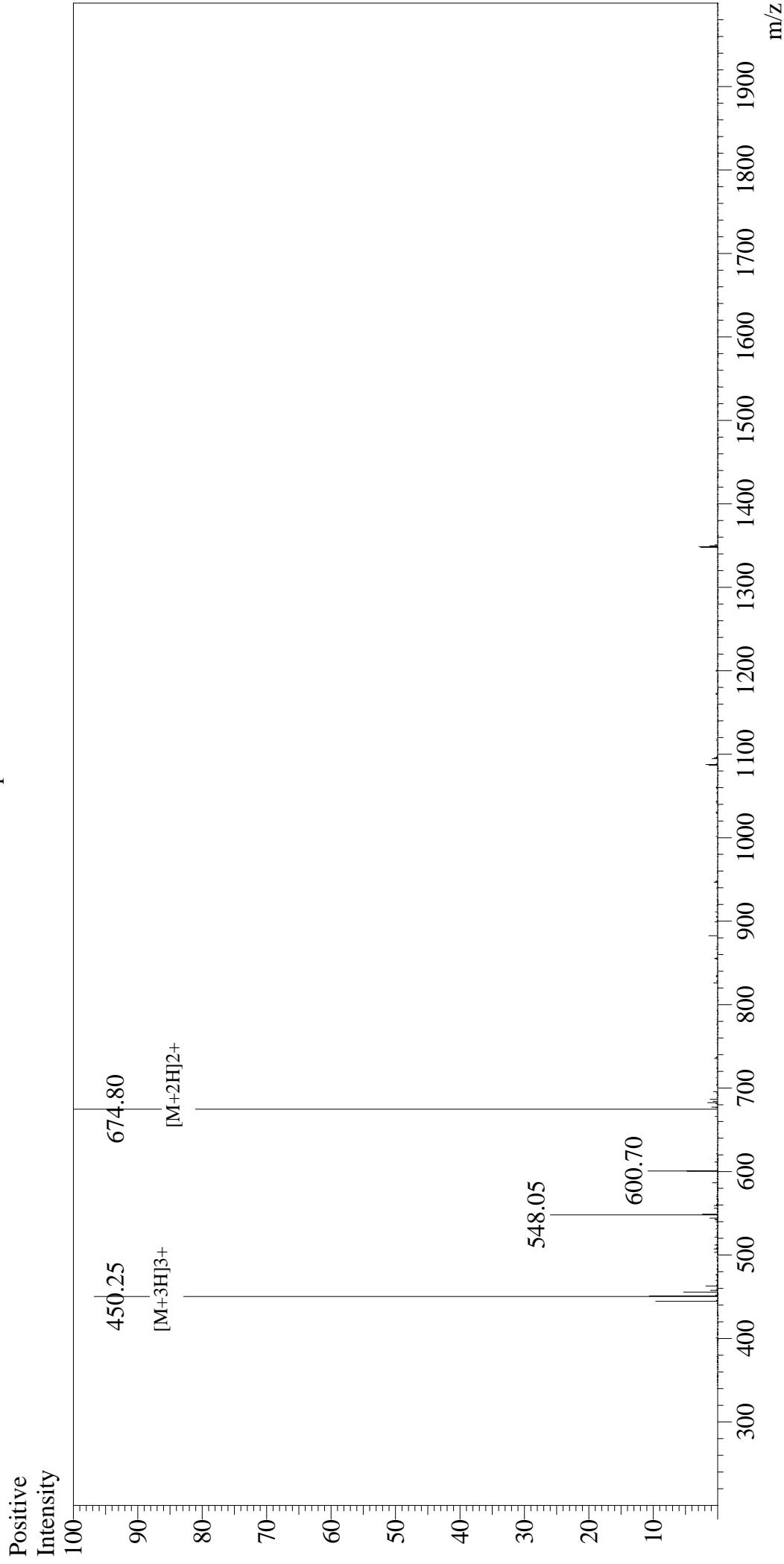


Mass Spectrum



Sample Information

User : Gary
Month-Day Processed : 06/21/18
Time Processed : 17:15:36
Injection Volume : 0.2
Sample Name : Substance P
Cat No. : RP10178
Lot No. : PE9891806
Theoretical MW : 1347.63
Observed MW : 1347.60

Interface

Interface : ESI
Nebulizing Gas Flow : 1.5L/min
CDL Temp : 250 °C
Block Temp : 200 °C

Interface Bias

Interface Bias : +4.5kV
Drying Gas Flow : 5 L/min
T.Flow : 0.2ml/min
B.conc : 50%H2O/50%MeOH