

Sample Name : Neuropeptide Y, human  
 Cat. No. : RP10492-0.5  
 Lot. No. : PE3321710

Pump A : 0.065% trifluoroacetic in 100% water (v/v)  
 Pump B : 0.05% trifluoroacetic in 100% acetonitrile (v/v)  
 Total Flow:1 ml/min  
 Wavelength:220 nm

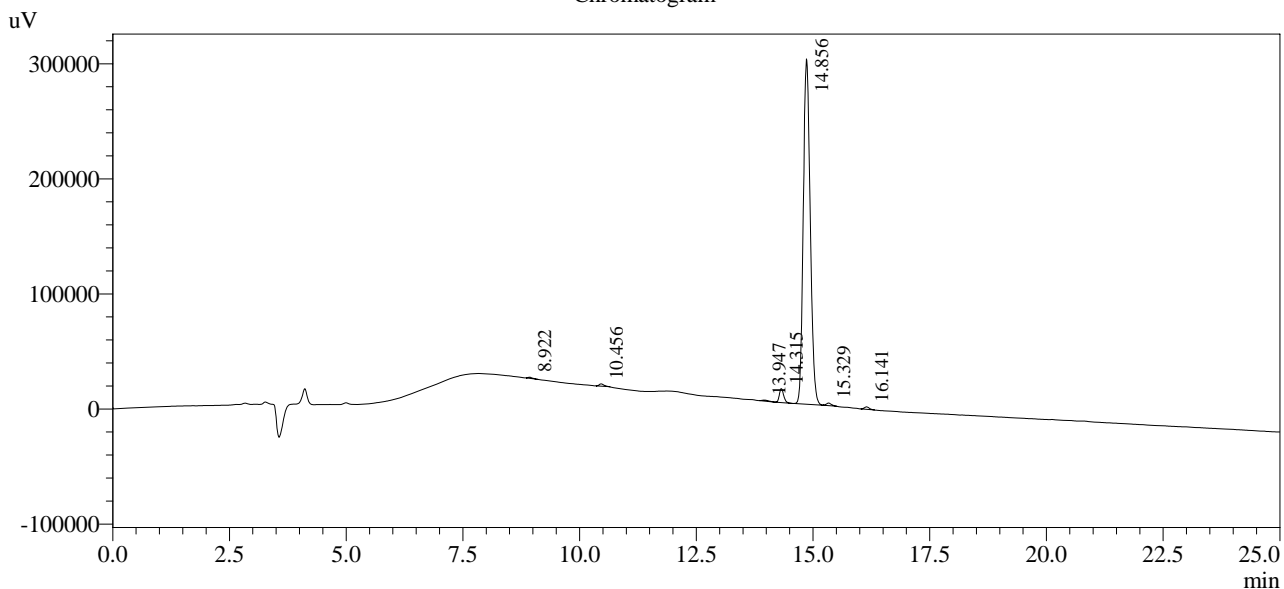
| Time  | Unit       | Command      | Value | Comment |
|-------|------------|--------------|-------|---------|
| 0.01  | Pumps      | Pump B Conc. | 5     |         |
| 10.00 | Pumps      | Pump B Conc. | 35    |         |
| 35.00 | Pumps      | Pump B Conc. | 95    |         |
| 41.00 | Pumps      | Pump B Conc. | 95    |         |
| 41.01 | Pumps      | Pump B Conc. | 5     |         |
| 50.00 | Pumps      | Pump B Conc. | 5     |         |
| 50.01 | Controller | Stop         |       |         |

<<Column Performance>>

<Detector A>

Column : Alltima™ C18 4.6 x 250 mm

Chromatogram



1 Det.A Ch1 / 220nm

Peak Table

Detector A Ch1 220nm

| Peak# | Ret. Time | Area    | Height | Area %  |
|-------|-----------|---------|--------|---------|
| 1     | 8.922     | 6528    | 981    | 0.200   |
| 2     | 10.456    | 14691   | 2014   | 0.450   |
| 3     | 13.947    | 8911    | 871    | 0.273   |
| 4     | 14.315    | 77826   | 12175  | 2.383   |
| 5     | 14.856    | 3102561 | 300123 | 95.010  |
| 6     | 15.329    | 16554   | 2221   | 0.507   |
| 7     | 16.141    | 15944   | 2170   | 0.488   |
| 8     | 25.832    | 4288    | 577    | 0.131   |
| 9     | 32.089    | 18205   | 2559   | 0.557   |
| Total |           | 3265506 | 323692 | 100.000 |