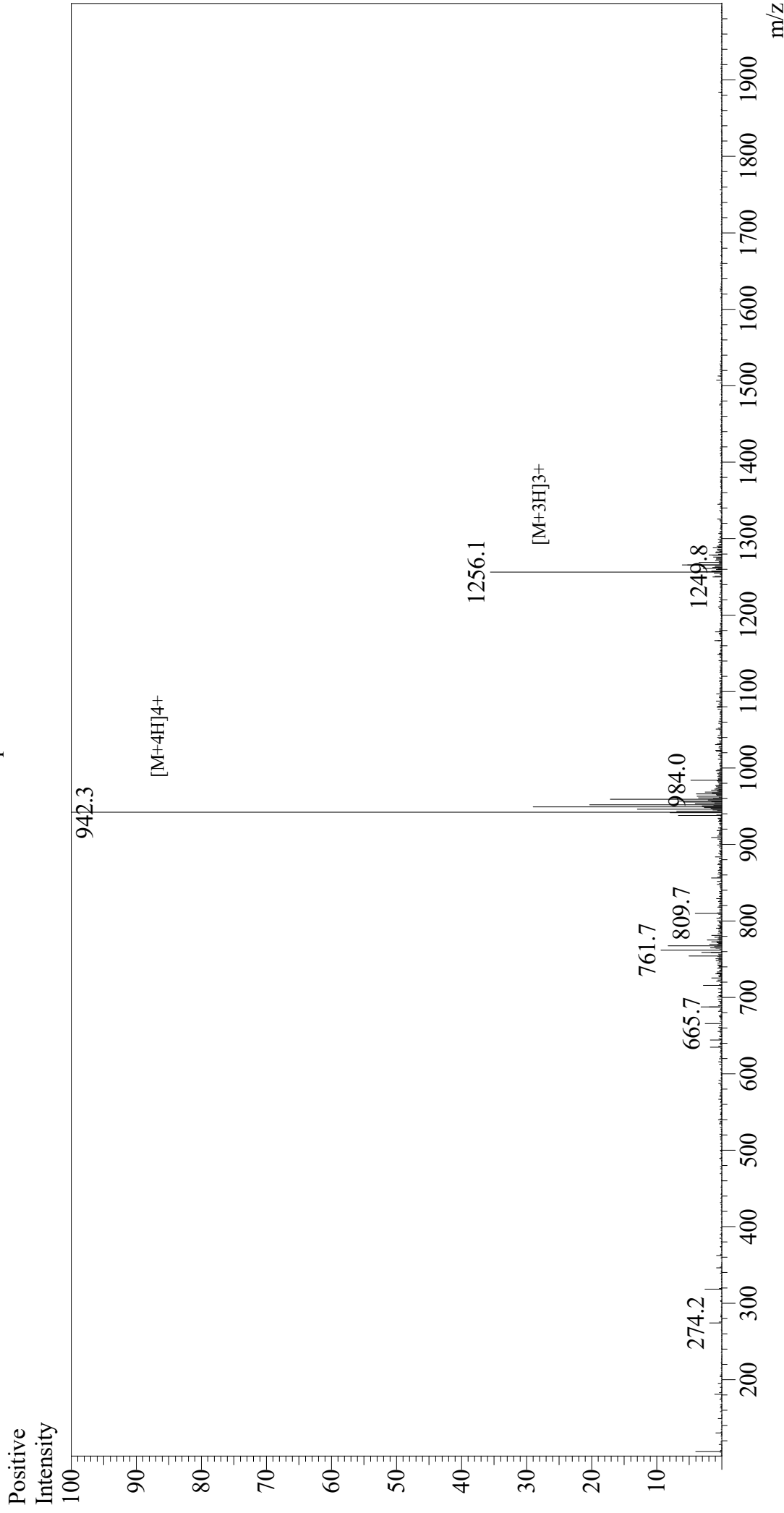


# Mass Spectrum



Sample Information	Equipment	: GK11010007
Month-Day Processed :	Interface Bias	: +4.5 kV
Time Processed :	Drying Gas Flow	: 5 L/min
Injection Volume :	T.Flow	: 0.2 ml/min
Sample Name :	B.conc	: 50% H2O/50% MeOH
Cat. No. :	Interface	: ESI
Lot. No. :	Nebulizing Gas Flow	: 1.5 L/min
Theoretical MW :	CDL Temp	: 250
Observed MW :	Block Temp	: 200

Glucagon-Like Peptide (GLP) II, human  
RP10769  
E7100721A  
3766.20  
3765.2