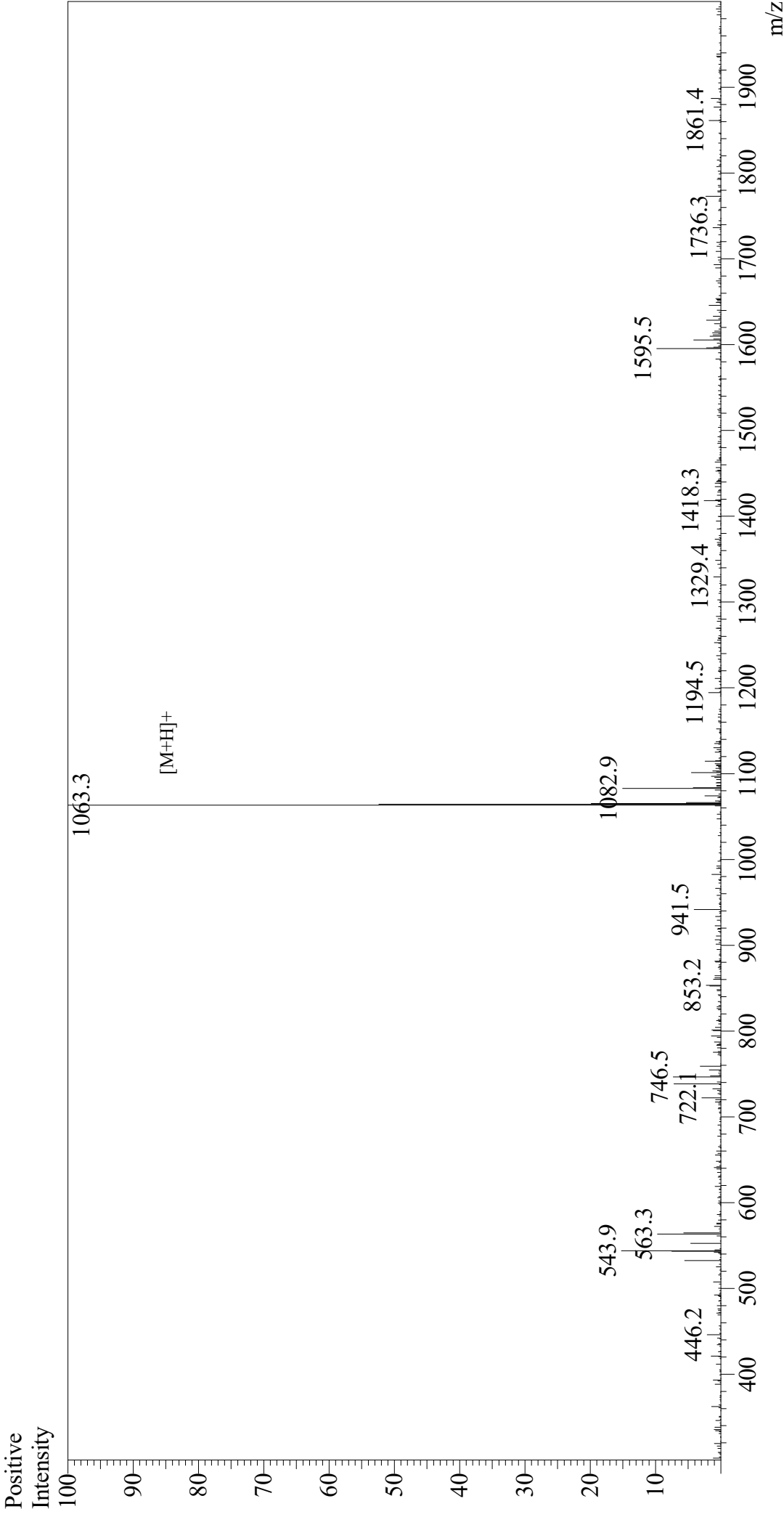


Mass Spectrum



Sample Information
Month-Day Processed : 05/09/21
Time Processed : 10:09:42 AM
Injection Volume : 0.4
Sample Name : Chemerin-9 (149-157)
Cat. No. : RP20248
Lot. No. : E7836121E
Theoretical MW : 1063.17
Observed MW : 1062.3

Interface : ESI
Nebulizing Gas Flow : 1.5L/min
CDL Temp : 250
Block Temp : 200

Equipment : GK11010007
Interface Bias : +4.5 kV
Drying Gas Flow : 5 L/min
T.Flow : 0.2 ml/min
B.conc : 50%H2O/50%MeOH