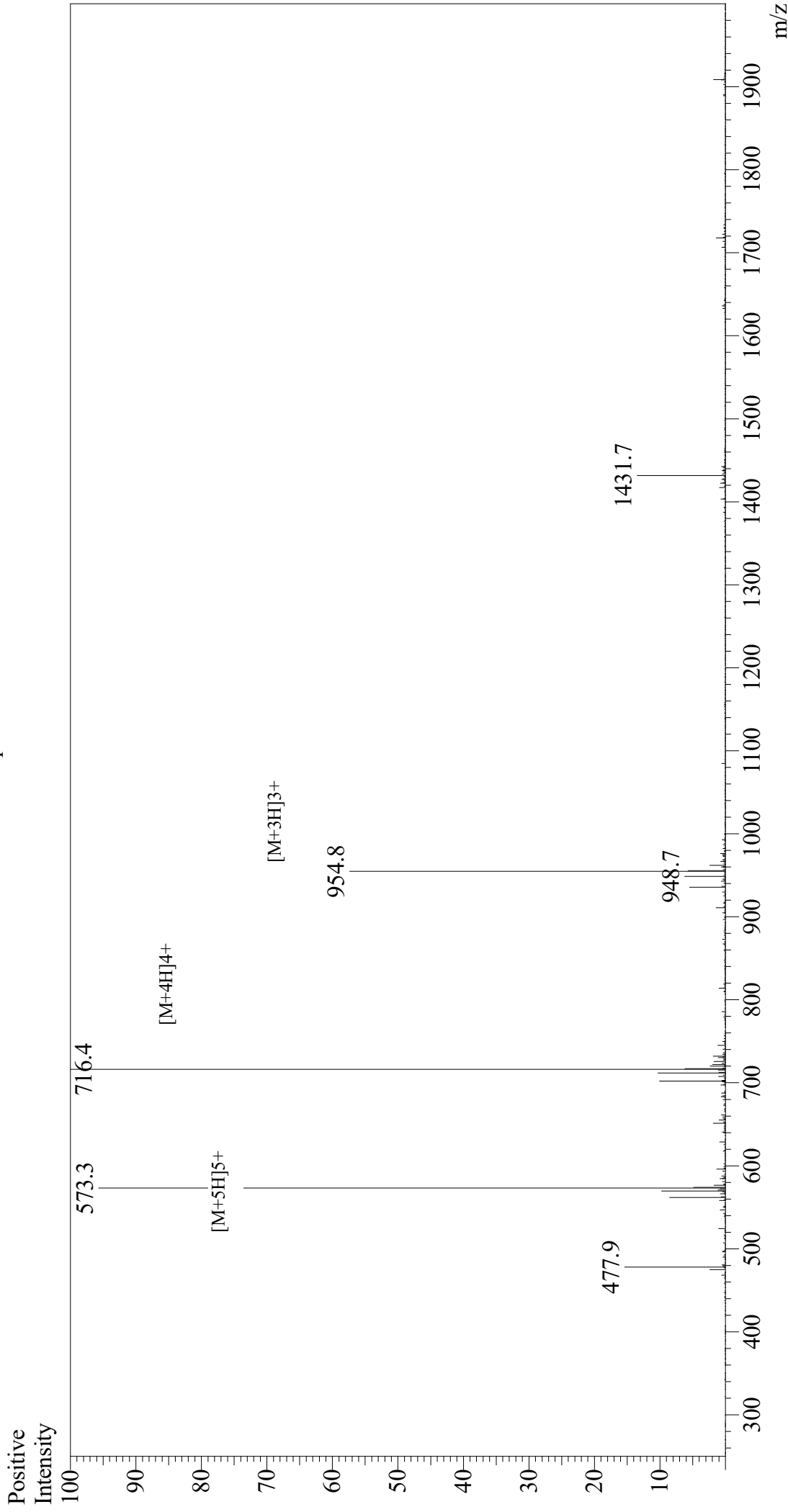


Mass Spectrum



Sample Information

Month-Day Processed : 11/01/20
 Time Processed : 06:30:26 PM
 Injection Volume : 0.6
 Sample Name : MDYKDHGDYKDHIDYKDDDDDK peptide
 Cat No. : RP21087
 Lot No. : E3662620J
 Theoretical MW : 2861.87
 Observed MW : 2861.6

Interface : ESI
 Nebulizing Gas Flow : 1.5L/min
 CDL Temp : 250
 Block Temp : 200

Equipment : GK11010007
 Interface Bias : +3.5 kV
 Drying Gas Flow : 5 L/min
 T.Flow : 0.2 ml/min
 B.conc : 50%H2O/50%MeOH