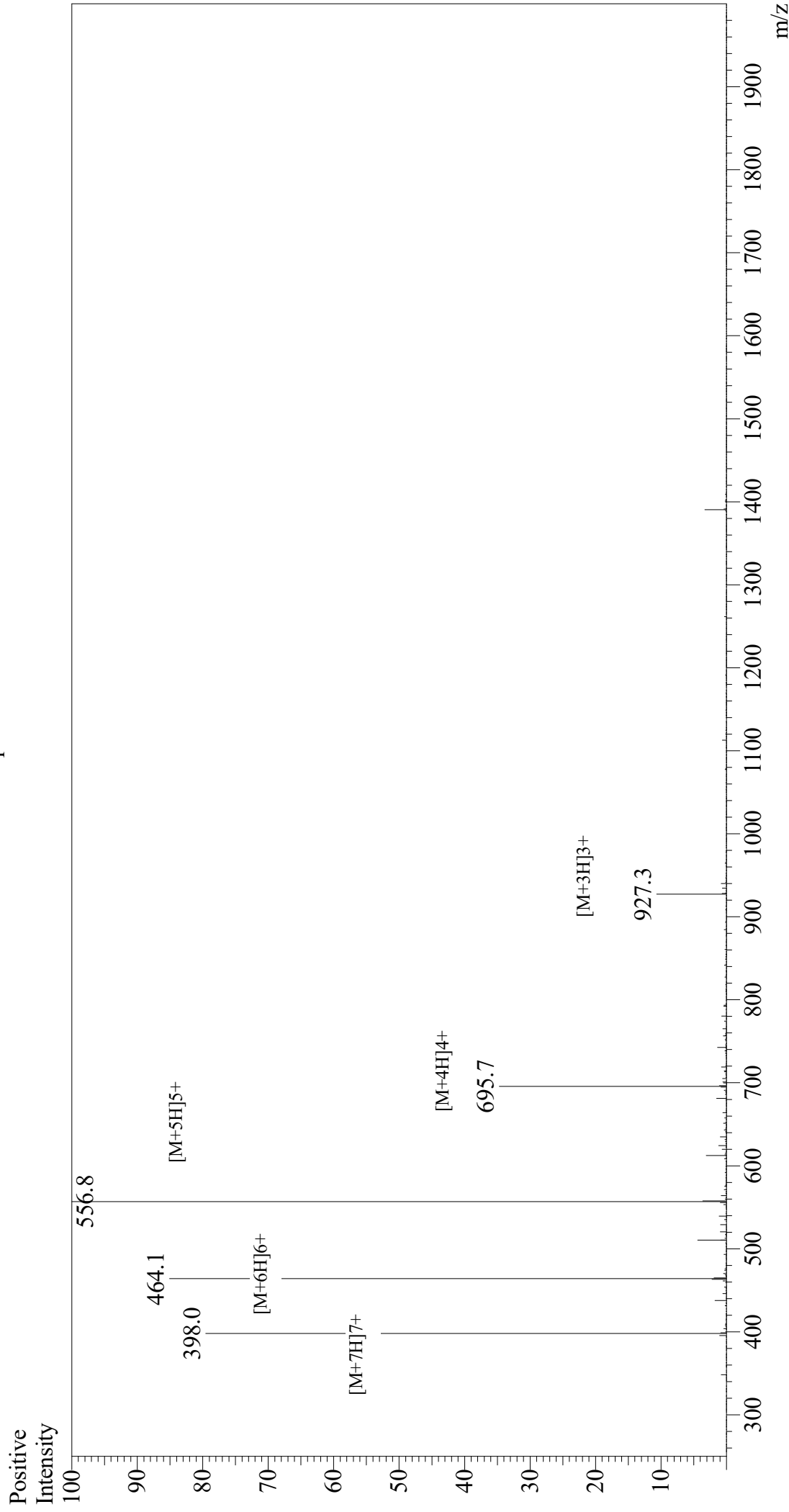


Mass Spectrum



Sample Information
Month-Day Processed : 01/16/21
Time Processed : 8:33:22 AM
Injection Volume : 0.3
Sample Name : LAH4
Cat No. : RP20096
Lot No. : E7329121A
Theoretical MW : 2779.47
Observed MW : 2779.0

Interface : ESI
Nebulizing Gas Flow : 1.5L/min
CDL Temp : 250
Block Temp : 200

Equipment : GK11010007
Interface Bias : +3.5 kV
Drying Gas Flow : 5 L/min
T.Flow : 0.2 ml/min
B.conc : 50%H2O/50%MeOH