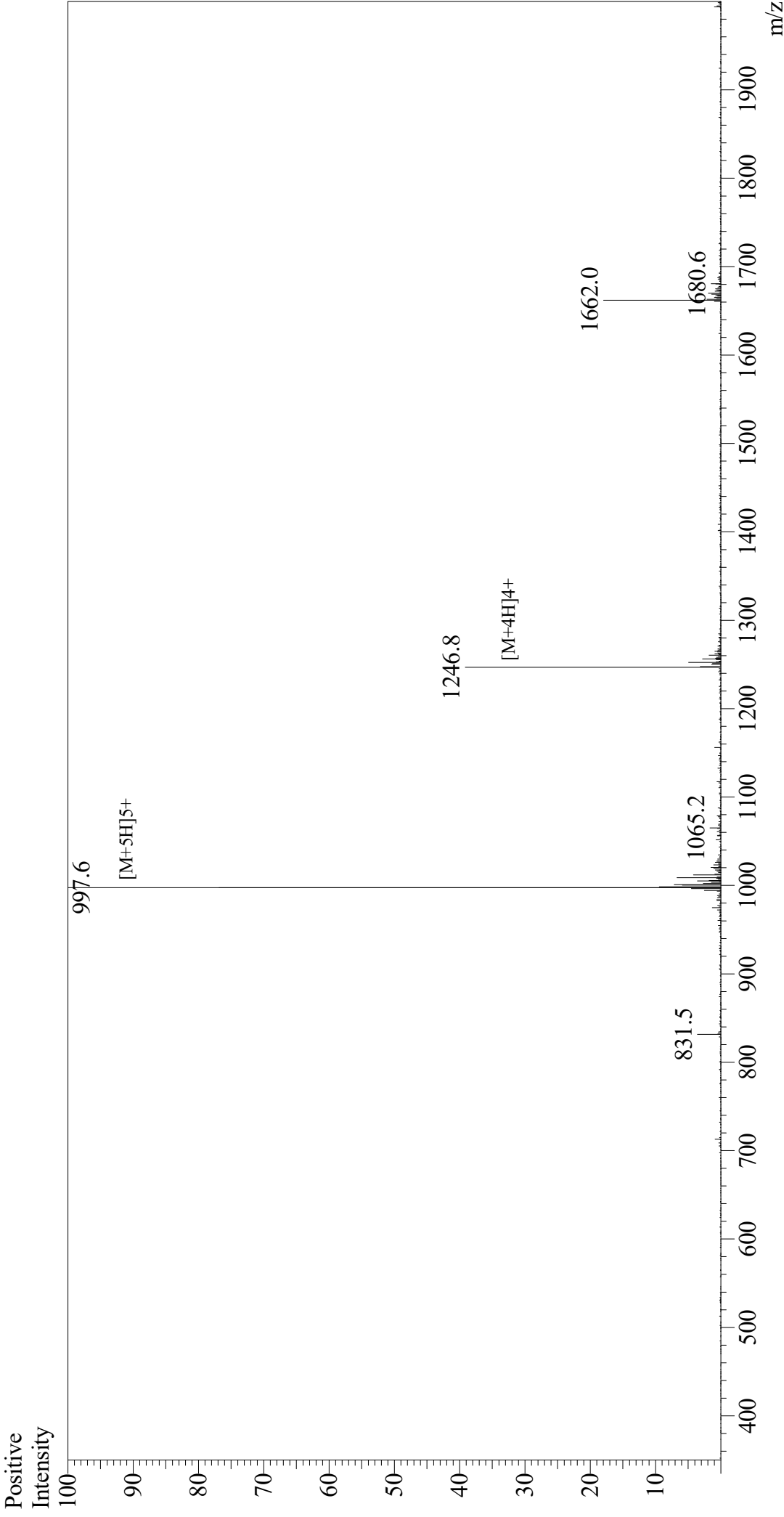


Mass Spectrum



Sample Information

Month-Day Processed : 08/15/21

Time Processed : 7:46:37

Injection Volume : 0.2

Sample Name : Gastric Inhibitory Peptide (GIP), human

Cat No : RP10795

Lot No : E6103621G

Theoretical MW : 4983.60

Observed MW : 4983.0

Interface : ESI

Nebulizing Gas Flow : 1.5L/min

CDL Temp : 250

Block Temp : 200

Equipment

Interface Bias : +4.5 kV

Drying Gas Flow : 5 L/min

T.Flow : 0.2 ml/min

B.conc : 50% H₂O/50% MeOH

Equipment : ZJ21010035