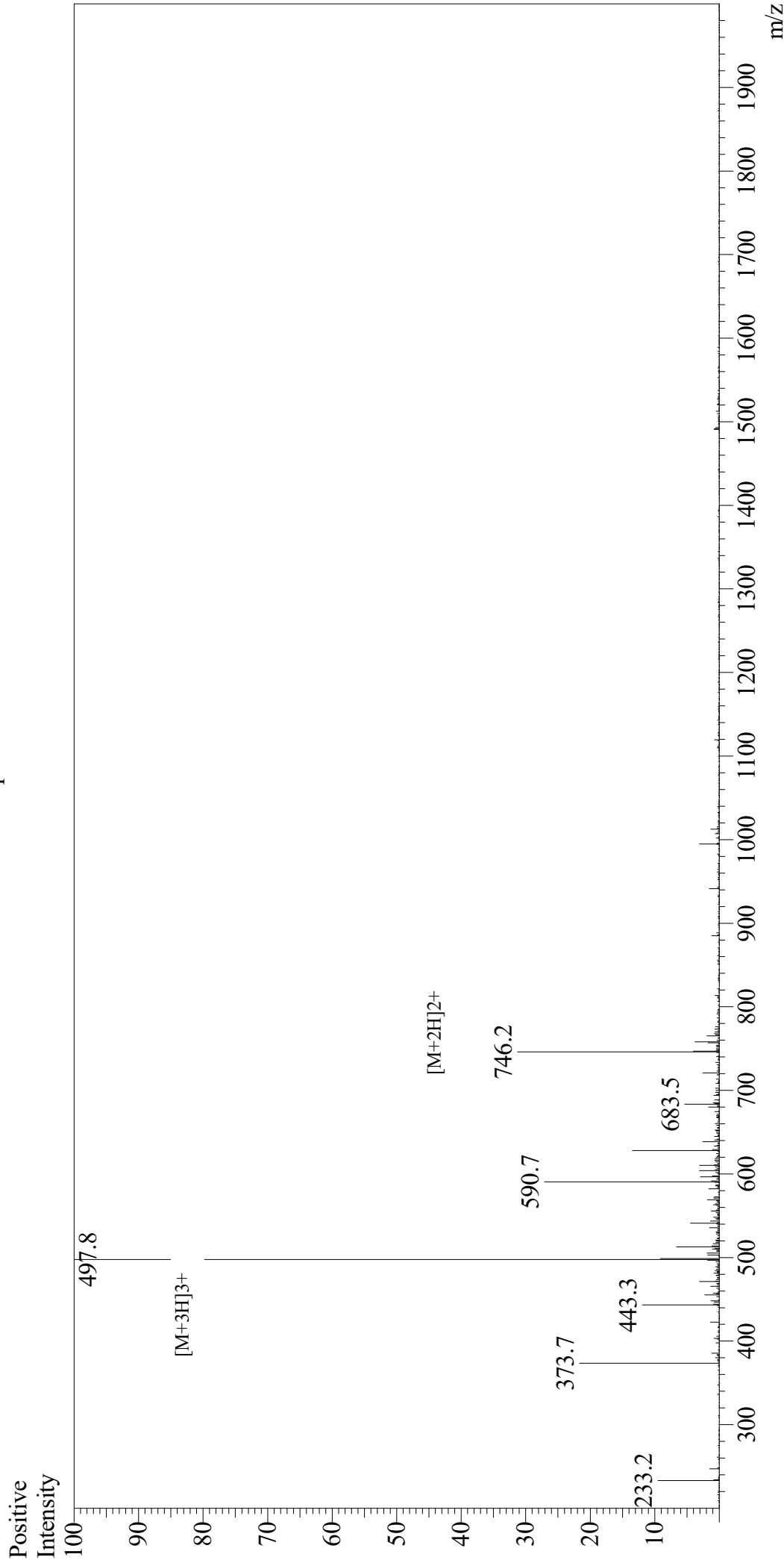


Mass Spectrum



Sample Information

User : Gary
Month-Day Processed : 09/18/19
Time Processed : 03:57:00 PM
Injection Volume : 0.3
Sample Name : SV40 T-Ag-derived NLS peptide
Cat No. : RP20513
Lot No. : E4666619I
Theoretical MW : 1490.80
Observed MW : 1490.4

Interface : ESI
Nebulizing Gas Flow : 1.5L/min
CDL Temp : 250
Block Temp : 200

Equipment : GK11010007
Interface Bias : +4.5kV
Drying Gas Flow : 5 L/min
T.Flow : 0.2ml/min
B.conc : 50%H2O/50%MeOH