

Sample Name :Glucagon-Like Peptide (GLP) I (7-36), amide, human
 Cat No. :RP10773
 Lot No. :E5502021B
 Time Processed :6:16:00 AM
 Month-Day-Year Processed :02/06/2021

Pump A : 0.065% trifluoroacetic in 100% water (v/v)
 Pump B : 0.05% trifluoroacetic in 100% acetonitrile (v/v)
 Total Flow:1 ml/min
 Wavelength:220 nm
 <<LC Time Program>>

Time	Module	Command	Value
0.01	Pumps	Pump A B.Conc	5
25.00	Pumps	Pump A B.Conc	65
25.01	Pumps	Pump A B.Conc	95
27.00	Pumps	Pump A B.Conc	95
27.01	Pumps	Pump A B.Conc	5
35.00	Pumps	Pump A B.Conc	5
35.01	Controller	Stop	

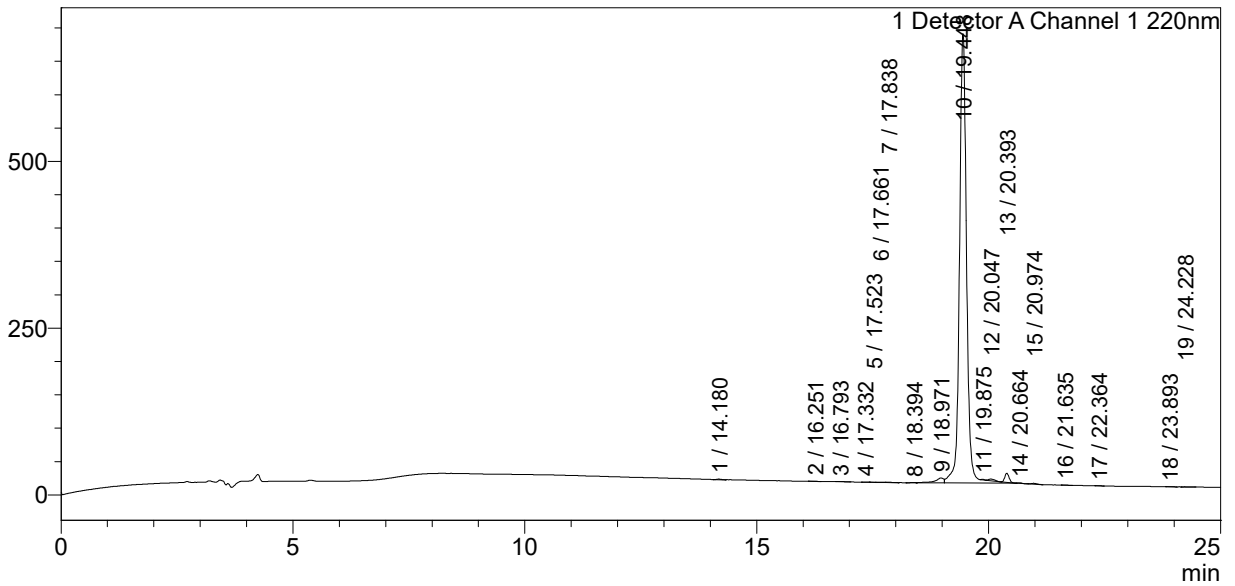
<<Column Performance>>

<Detector A>

Column :Inertsil ODS-3 4.6 x 250 mm
 Equipment: ZJ19010141

<Chromatogram>

mV



<Peak Table>

Detector A Channel 1 220nm

Peak#	Ret. Time	Area	Height	Area%
1	14.180	5387	867	0.073
2	16.251	2505	422	0.034
3	16.793	3947	475	0.053
4	17.332	1128	223	0.015
5	17.523	1518	273	0.020
6	17.661	5373	542	0.072
7	17.838	4360	567	0.059
8	18.394	2213	283	0.030
9	18.971	97368	7402	1.312
10	19.448	7158114	673765	96.448
11	19.875	3614	884	0.049
12	20.047	26499	2597	0.357
13	20.393	88515	13868	1.193
14	20.664	4372	786	0.059

Peak#	Ret. Time	Area	Height	Area%
15	20.974	11071	1340	0.149
16	21.635	1421	210	0.019
17	22.364	1002	161	0.014
18	23.893	1720	187	0.023
19	24.228	1592	177	0.021
Total		7421719	705027	100.000