

Sample Name : Glucagon-Like Peptide (GLP) I (7-36), amide, human
 Cat. No. : RP10773
 Lot. No. : PE4371903
 Time Processed : 12:08:52
 Month-Day-Year Processed : 03/13/2019

Pump A : 0.065% trifluoroacetic in 100% water (v/v)
 Pump B : 0.05% trifluoroacetic in 100% acetonitrile (v/v)
 Total Flow:1 ml/min
 Wavelength:220 nm

Time	Unit	Command	Value	Comment
0.01	Pumps	Pump B Conc.	5	
25.00	Pumps	Pump B Conc.	65	
25.01	Pumps	Pump B Conc.	95	
27.00	Pumps	Pump B Conc.	95	
27.01	Pumps	Pump B Conc.	5	
35.00	Pumps	Pump B Conc.	5	
35.01	Controller	Stop		

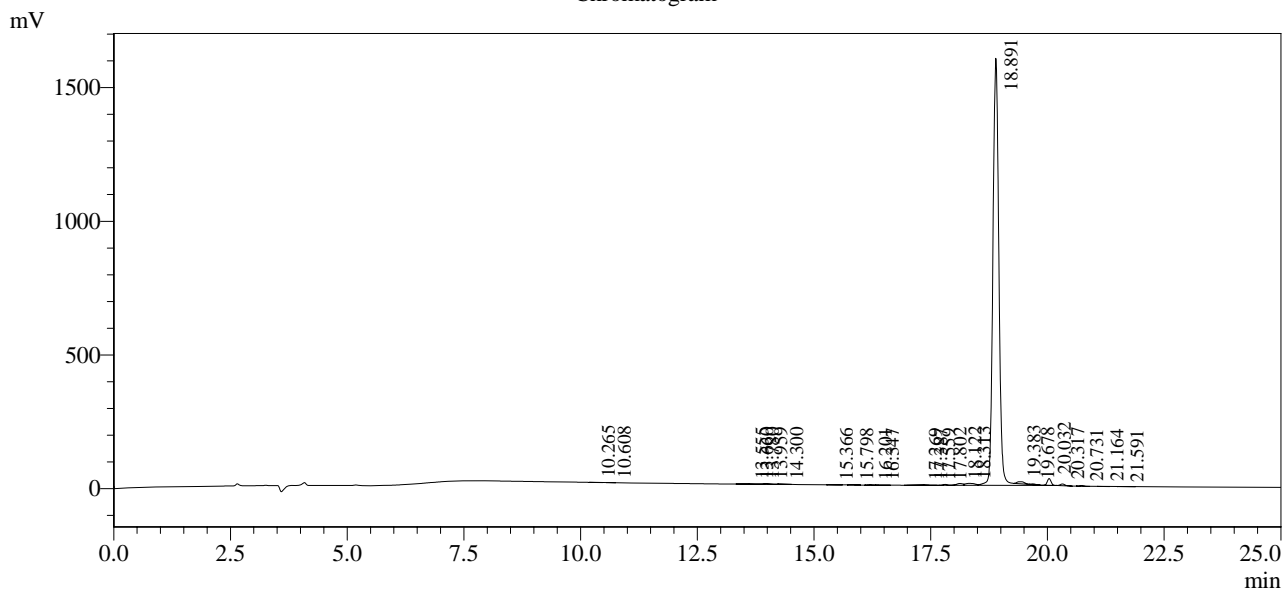
<<Column Performance>>

<Detector A>

Column :Inertsil ODS-3 4.6 x 250 mm

Equipment: SS-CM-0309

Chromatogram



1 Det.A Ch1 / 220nm

Peak Table

Detector A Ch1 220nm

Peak#	Ret. Time	Area	Height	Area %
1	10.265	5856	918	0.040
2	10.608	1637	340	0.011
3	13.555	2806	359	0.019
4	13.660	3549	431	0.024
5	13.780	2421	506	0.016
6	13.959	13402	1734	0.090
7	14.300	6416	1114	0.043
8	15.366	3223	521	0.022
9	15.798	8029	1410	0.054
10	16.201	4620	855	0.031
11	16.347	1916	166	0.013
12	17.269	28648	1748	0.193
13	17.387	11481	1686	0.078
14	17.559	3925	657	0.027
15	17.802	21676	3317	0.146
16	18.122	73115	7022	0.494
17	18.313	105377	7323	0.712
18	18.891	14197786	1597392	95.875
19	19.383	84922	7202	0.573
20	19.678	17235	2475	0.116
21	20.032	142980	25393	0.966
22	20.317	44762	6474	0.302
23	20.731	14396	2220	0.097
24	21.164	5370	718	0.036

Peak#	Ret. Time	Area	Height	Area %
25	21.591	3048	344	0.021
Total		14808597	1672326	100.000