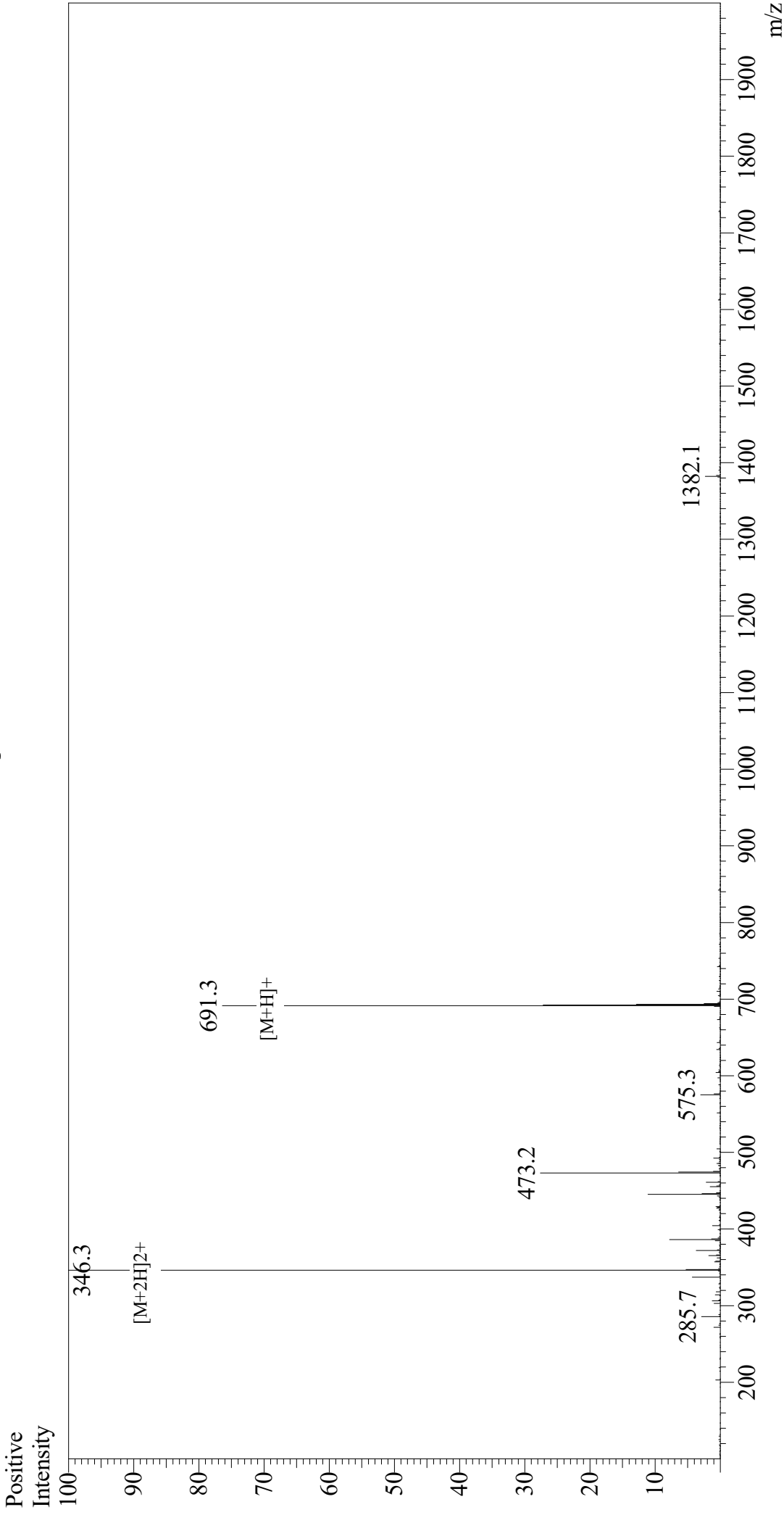


Mass Spectrum



Sample Information

Acquired by : Gary
Month-Day Processed : 06/05/19
Time Processed : 09:14:32 PM
Injection Volume : 0.3
Sample Name : GRGDSPC
Cat. No. : RP20283
Lot. No. : PE8551905
Theoretical MW : 690.73
Observed MW : 690.6

Interface : ESI
Nebulizing Gas Flow : 1.5L/min
CDL Temp : 250
Block Temp : 200

Equipment : GK11010007
Interface Bias : +4.5 kV
Drying Gas Flow : 5 L/min
T.Flow : 0.2 ml/min
B.conc : 50% H₂O/50% MeOH