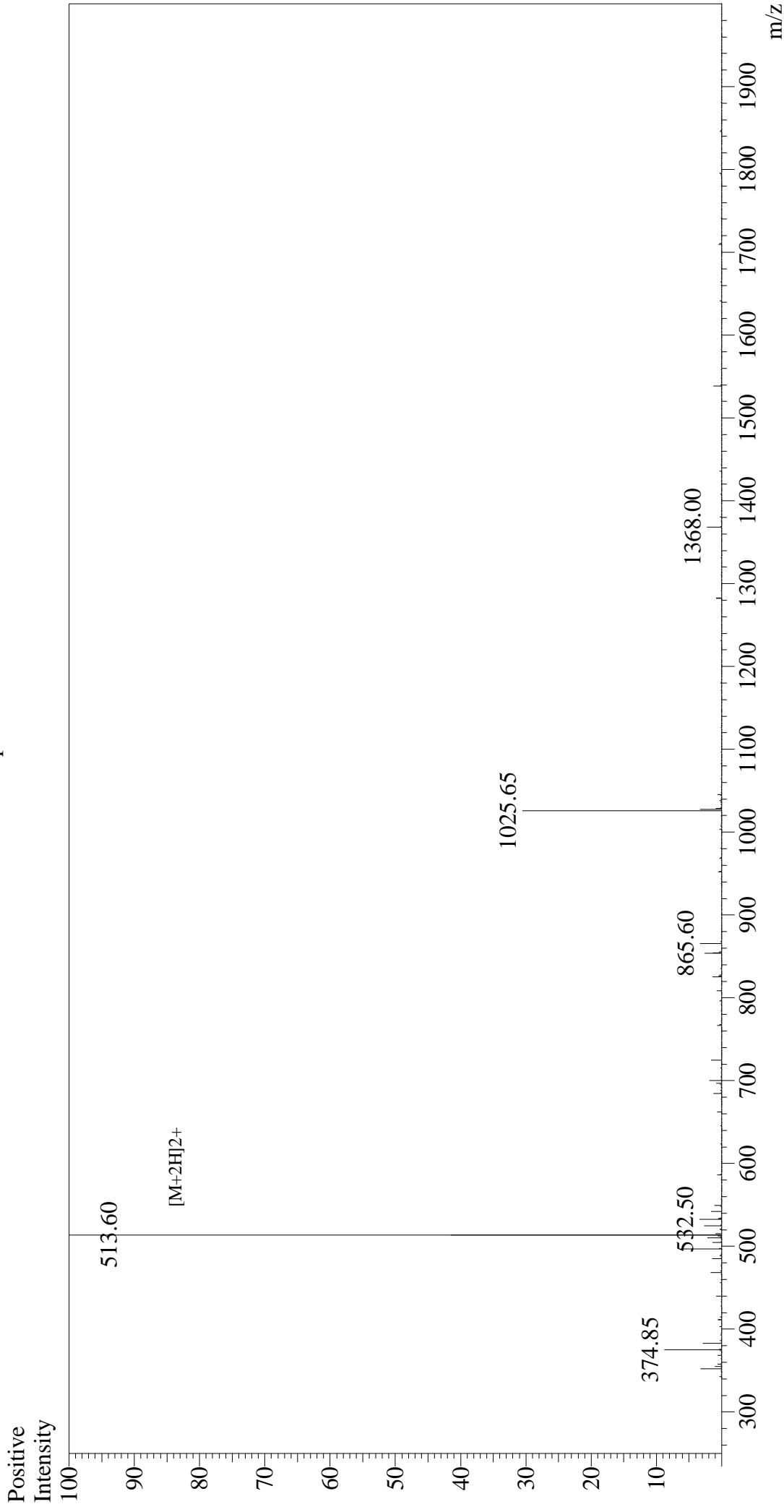


# Mass Spectrum



## Sample Information

Acquired by : Gary  
Month-Day Processed : 02/08/18  
Time Processed : 15:36:58  
Injection Volume : 0.2  
Sample Name : RGD  
Sample ID : U7947DB050-1  
Theoretical MW : 1025.06  
Observed MW : 1025.20

Interface : ESI  
Nebulizing Gas Flow : 1.5L/min  
CDL Temp : 250°C  
Block Temp : 200°C

Interface Bias : +4.5 kV  
Drying Gas Flow : 5 L/min  
T.Flow : 0.2 ml/min  
B.conc : 50% H2O/50% MeOH