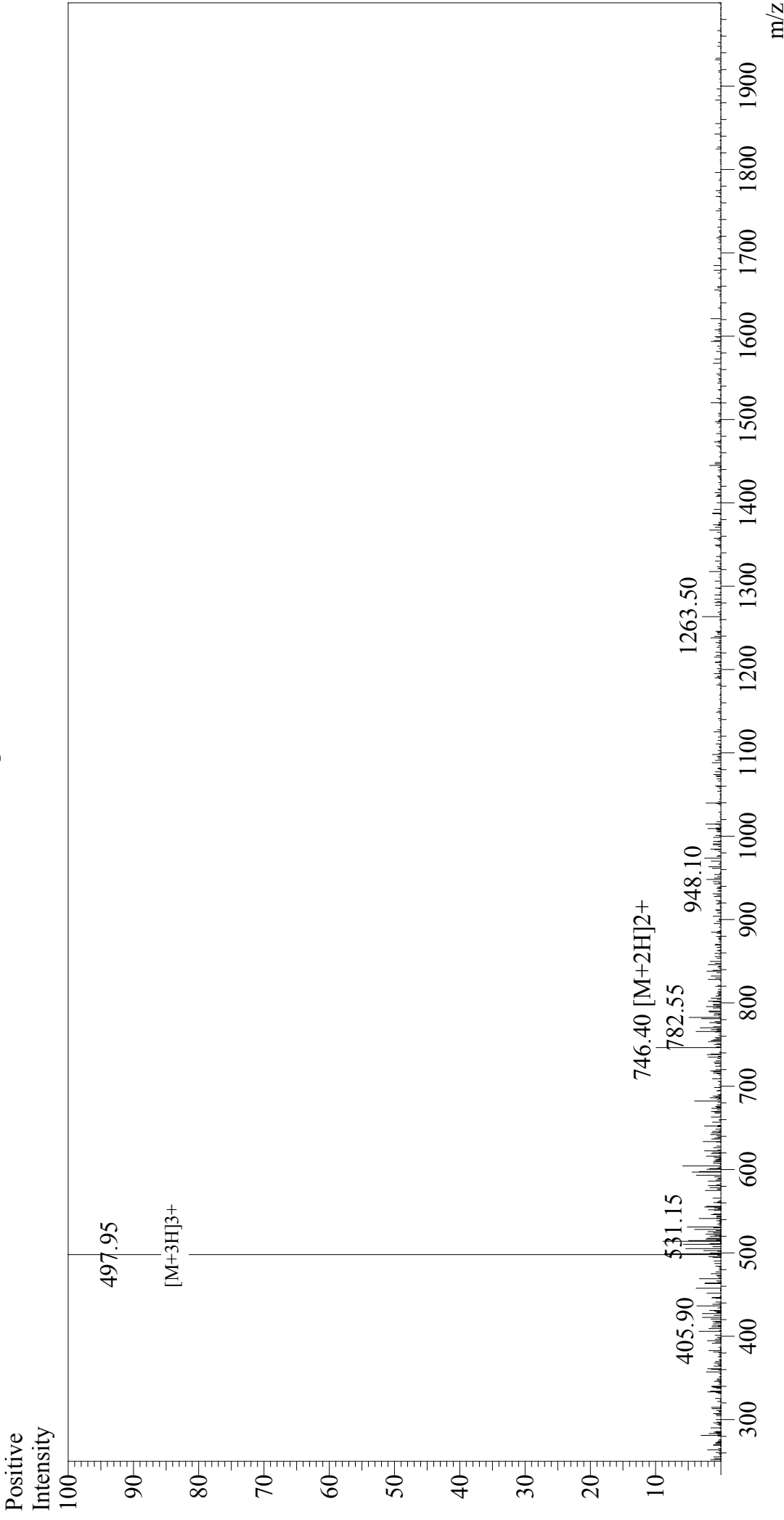


# Mass Spectrum



## Sample Information

Acquired by : Gary  
Month-Day Processed : 10/27/17  
Time Processed : 22:23:02  
Injection Volume : 0.2  
Sample Name : SV40 T-Ag- derived NLS peptide  
Sample ID : U7865CJ250-1  
Theoretical MW : 1490.80  
Observed MW : 1490.85

## Interface

Interface : ESI  
Nebulizing Gas Flow : 1.5L/min  
CDL Temp : 250°C  
Block Temp : 200°C

## Interface Bias

Interface Bias : +4.5 kV  
Drying Gas Flow : 5 L/min  
T.Flow : 0.2 ml/min  
B.conc : 50% H<sub>2</sub>O/50% MeOH