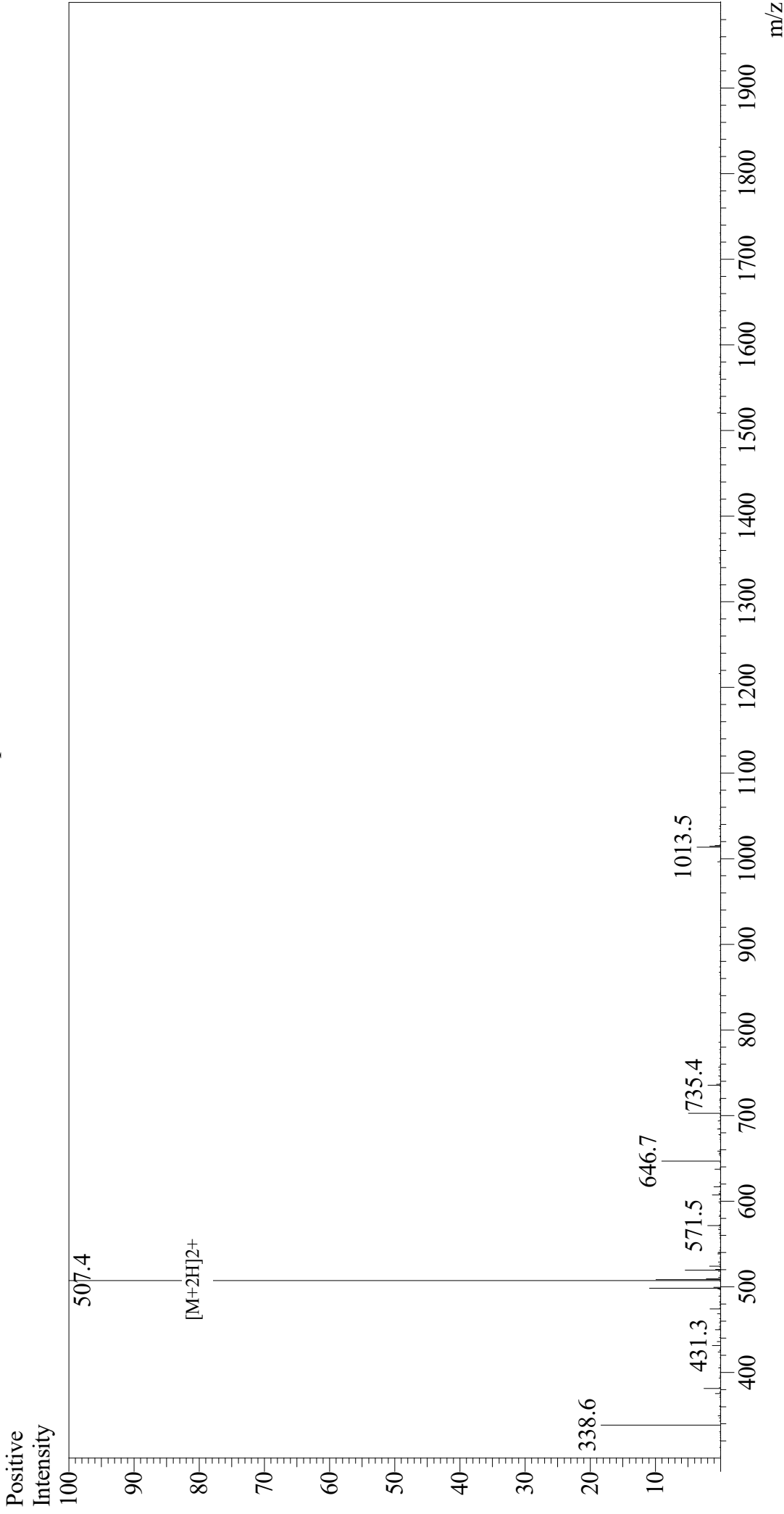


Mass Spectrum



Sample Information

Acquired by : Gary
 Month-Day Processed : 07/22/19
 Time Processed : 04:07:44 PM
 Injection Volume : 0.3
 Sample Name : DYKDDDDK Peptide
 Cat. No. : RP10586
 Lot. No. : E2914019G
 Theoretical MW : 1012.97
 Observed MW : 1012.8

Interface : ESI
 Nebulizing Gas Flow : 1.5L/min
 CDL Temp : 250
 Block Temp : 200

Equipment : GK11010007
 Interface Bias : +4.5 kV
 Drying Gas Flow : 5 L/min
 T.Flow : 0.2 ml/min
 B.conc : 50% H₂O/50% MeOH