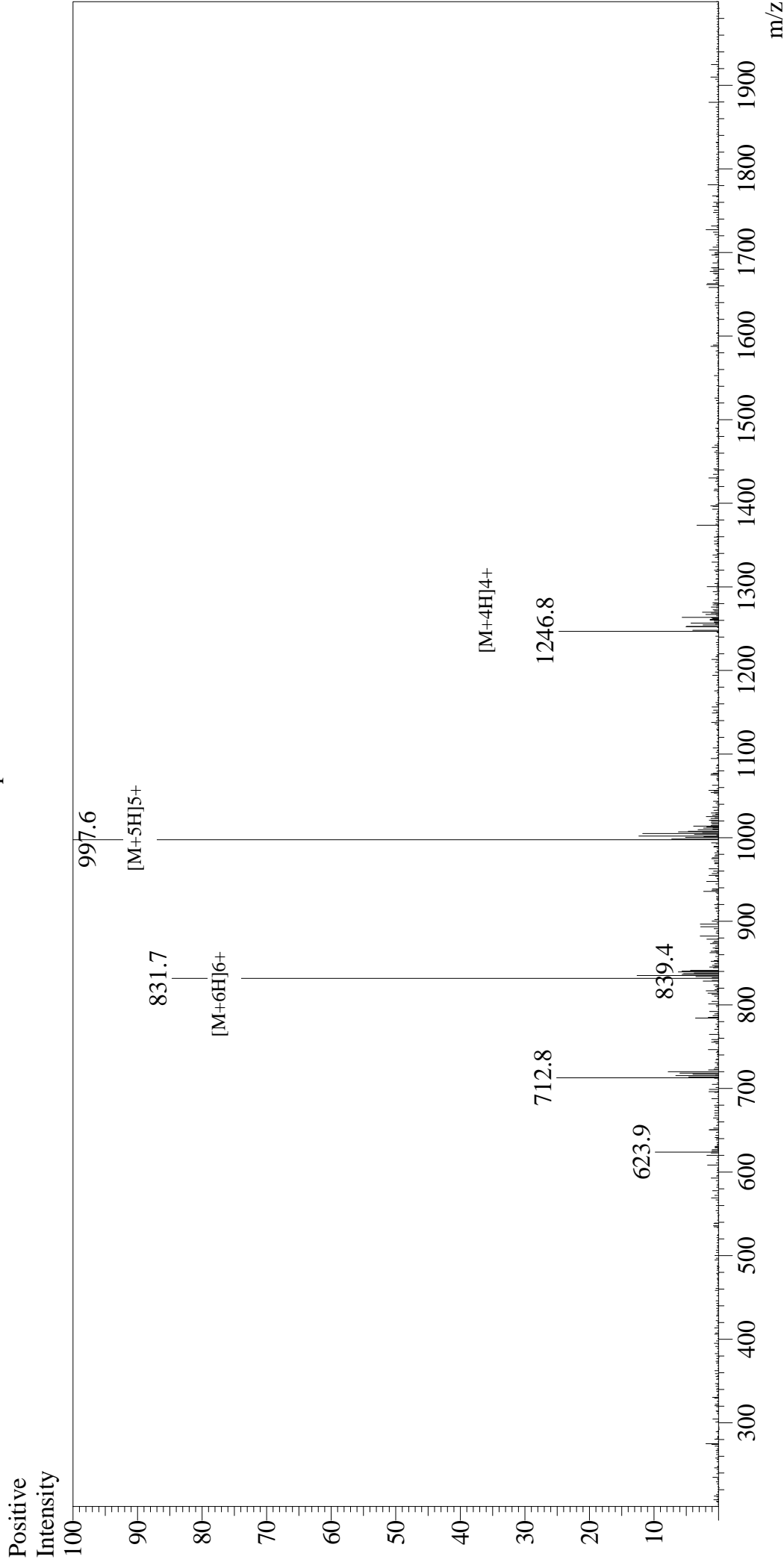


# Mass Spectrum



## Sample Information

User : Gary  
Month-Day Processed : 03/27/20  
Time Processed : 12:40:44  
Injection Volume : 0.3  
Sample Name : Gastric Inhibitory Peptide (GIP), human  
Cat No. : RP10795  
Lot No. : E3607620C  
Theoretical MW : 4983.60  
Observed MW : 4983.0

## Interface

Interface : ESI  
Nebulizing Gas Flow : 1.5L/min  
CDL Temp : 250  
Block Temp : 200

## Equipment

Equipment : GK11010007  
Interface Bias : +4.5kV  
Drying Gas Flow : 5 L/min  
T.Flow : 0.2ml/min  
B.conc : 50%H2O/50%MeOH