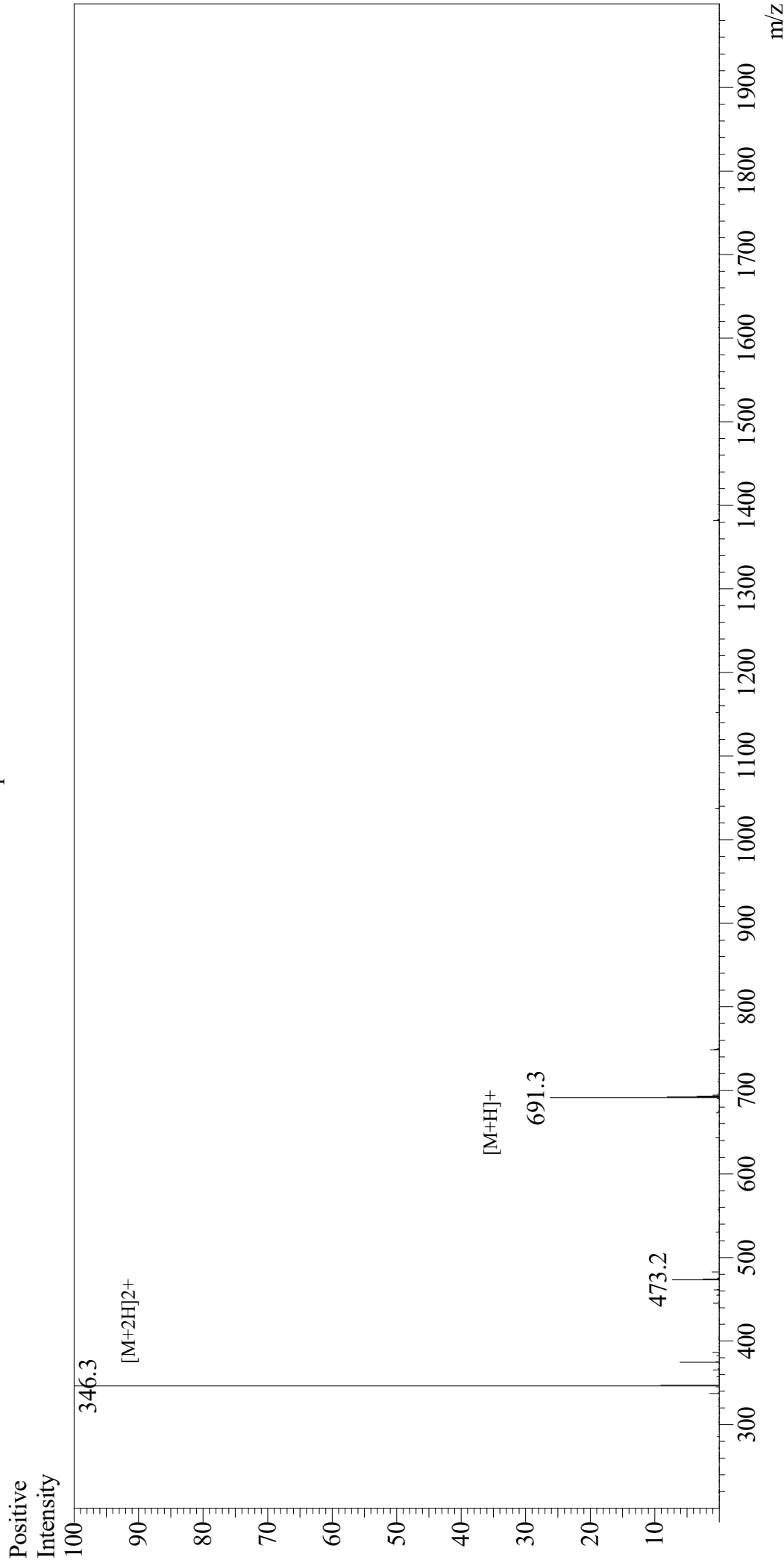


Mass Spectrum



Sample Information

User : Gary
Month-Day Processed : 02/10/20
Time Processed : 06:59:05 PM
Injection Volume : 0.3
Sample Name : GRGDSPC
Cat No. : RP20283
Lot No. : E3429120B
Theoretical MW : 689.73
Observed MW : 690.6

Interface : ESI
Nebulizing Gas Flow : 1.5L/min
CDL Temp : 250
Block Temp : 200

Equipment : GK11010007
Interface Bias : +4.5kV
Drying Gas Flow : 5 L/min
T.Flow : 0.2ml/min
B.conc : 50%H2O/50%MeOH