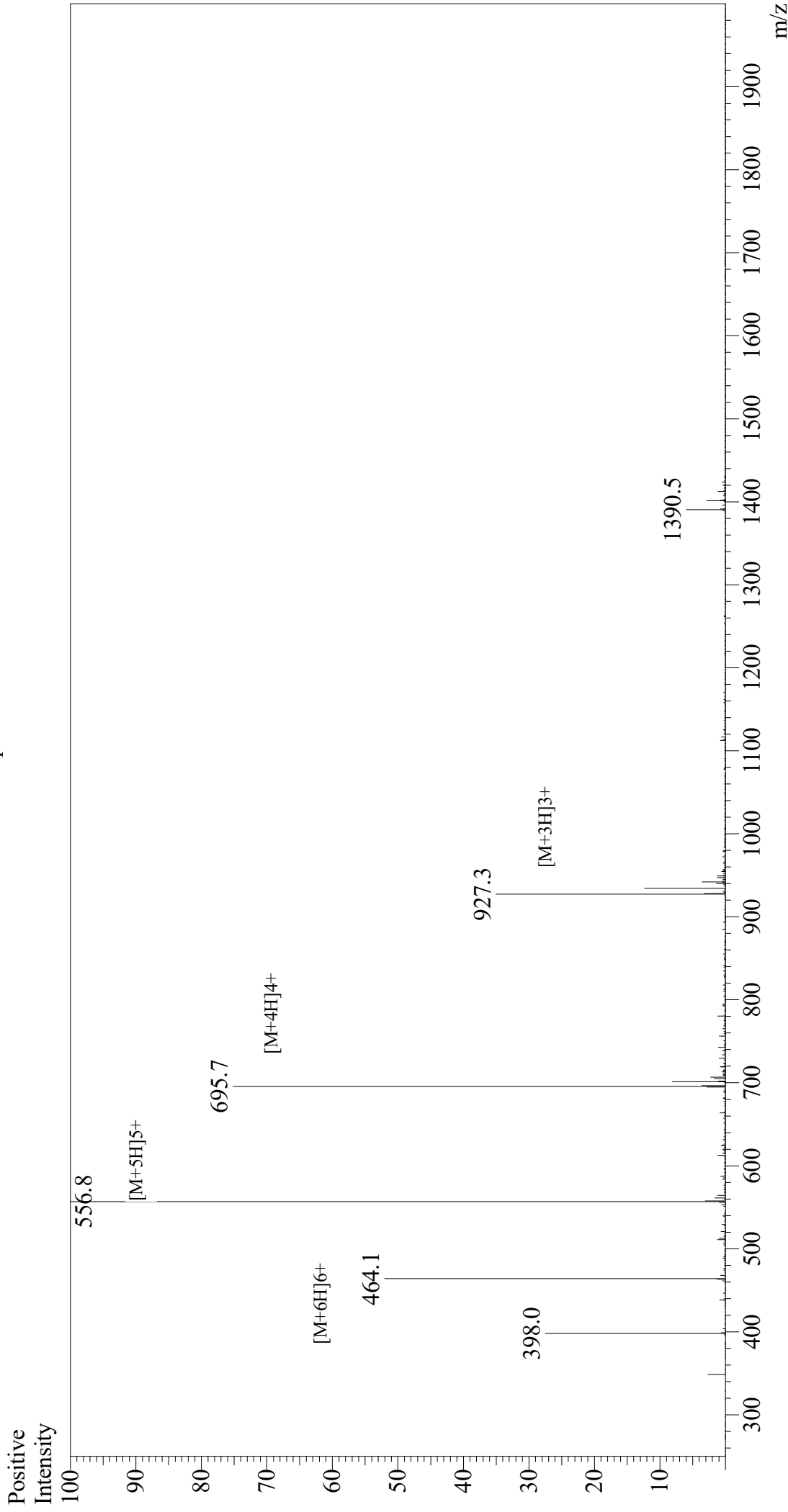


Mass Spectrum



Sample Information

Month-Day Processed : 12/24/20
Time Processed : 10:16:03 AM
Injection Volume : 0.4
Sample Name : LAH4
Cat No. : RP20096
Lot No. : E7210520L
Theoretical MW : 2779.47
Observed MW : 2779.0

Interface

Interface : ESI
Nebulizing Gas Flow : 1.5L/min
CDL Temp : 250
Block Temp : 200

Equipment

Equipment : GK11010007
Interface Bias : +3.5 kV
Drying Gas Flow : 5 L/min
T.Flow : 0.2 ml/min
B.conc : 50%H2O/50%MeOH