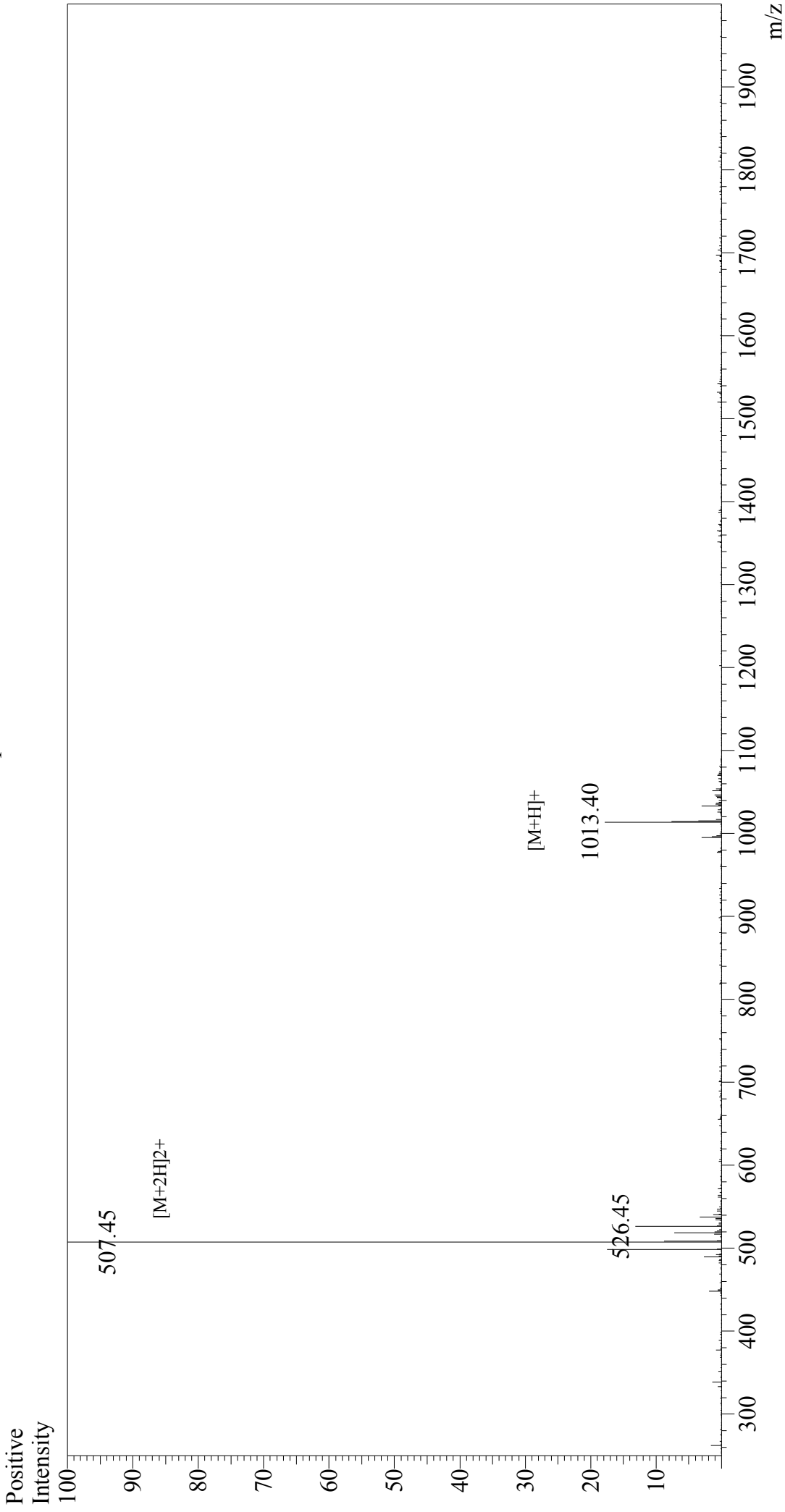


Mass Spectrum



Sample Information

Acquired by : Gary
Month-Day Processed : 09/14/17
Time Processed : 10:20:06
Injection Volume : 0.2
Sample Name : DYKDDDDK Peptide
Cat No. : RP10586
Lot No. : PE3281709
Theoretical MW : 1012.98
Observed MW : 1012.90

Interface : ESI
Nebulizing Gas Flow : 1.5L/min
CDL Temp : 250°C
Block Temp : 200°C

Interface Bias : +4.5 kV
Drying Gas Flow : 5 L/min
T.Flow : 0.2 ml/min
B.conc : 50% H₂O/50% MeOH