

Sample Name :DYKDDDDK Peptide

Cat No.: RP10586

Lot No. : PE3281709

Pump A : 0.065% trifluoroacetic in 100% water (v/v)

Pump B : 0.05% trifluoroacetic in 100% acetonitrile (v/v)

Total Flow:1 ml/min

Wavelength:220 nm

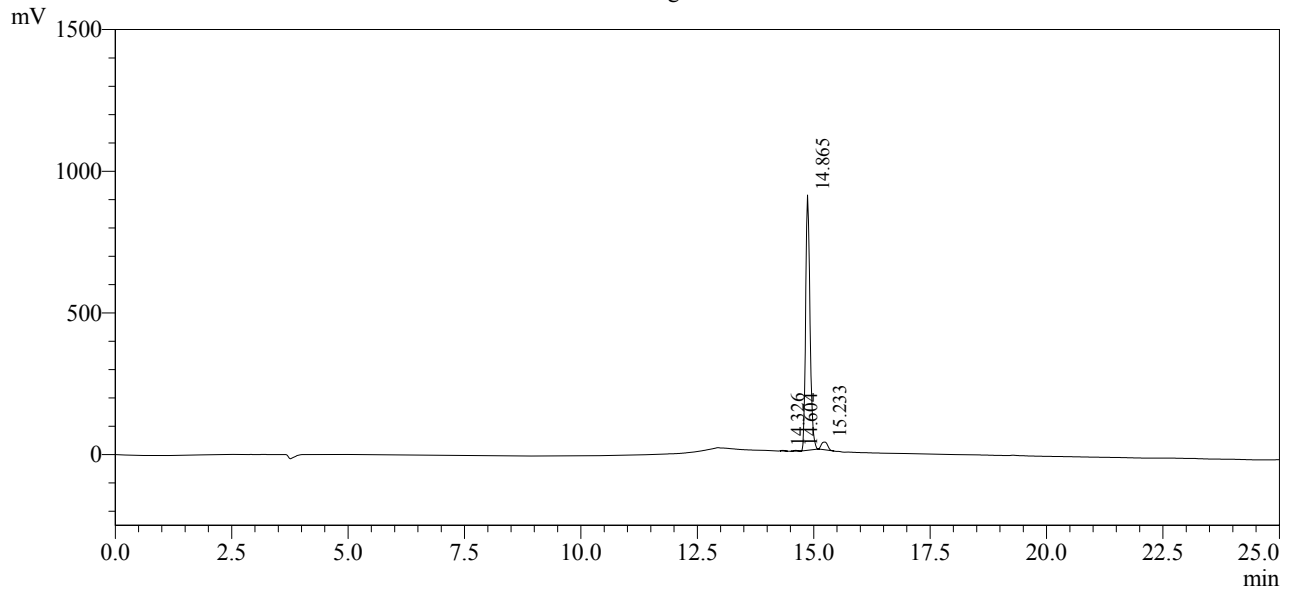
| Time | Unit | Command | Value | Comment |
|-------|------------|--------------|-------|---------|
| 0.01 | Pumps | Pump B Conc. | 0 | |
| 5.00 | Pumps | Pump B Conc. | 0 | |
| 20.00 | Pumps | Pump B Conc. | 30 | |
| 25.00 | Pumps | Pump B Conc. | 65 | |
| 25.01 | Pumps | Pump B Conc. | 95 | |
| 31.00 | Pumps | Pump B Conc. | 95 | |
| 31.01 | Pumps | Pump B Conc. | 0 | |
| 40.00 | Pumps | Pump B Conc. | 0 | |
| 40.01 | Controller | Stop | | |

<<Column Performance>>

<Detector A>

Column : AlltimaTM C18 4.6 x 250 mm

Chromatogram



1 Det.A Ch1 / 220nm

Peak Table

Detector A Ch1 220nm

| Peak# | Ret. Time | Area | Height | Area % |
|-------|-----------|---------|--------|---------|
| 1 | 14.326 | 9845 | 2032 | 0.159 |
| 2 | 14.604 | 17941 | 2998 | 0.290 |
| 3 | 14.865 | 5897600 | 901567 | 95.480 |
| 4 | 15.233 | 251394 | 27321 | 4.070 |
| Total | | 6176780 | 933917 | 100.000 |