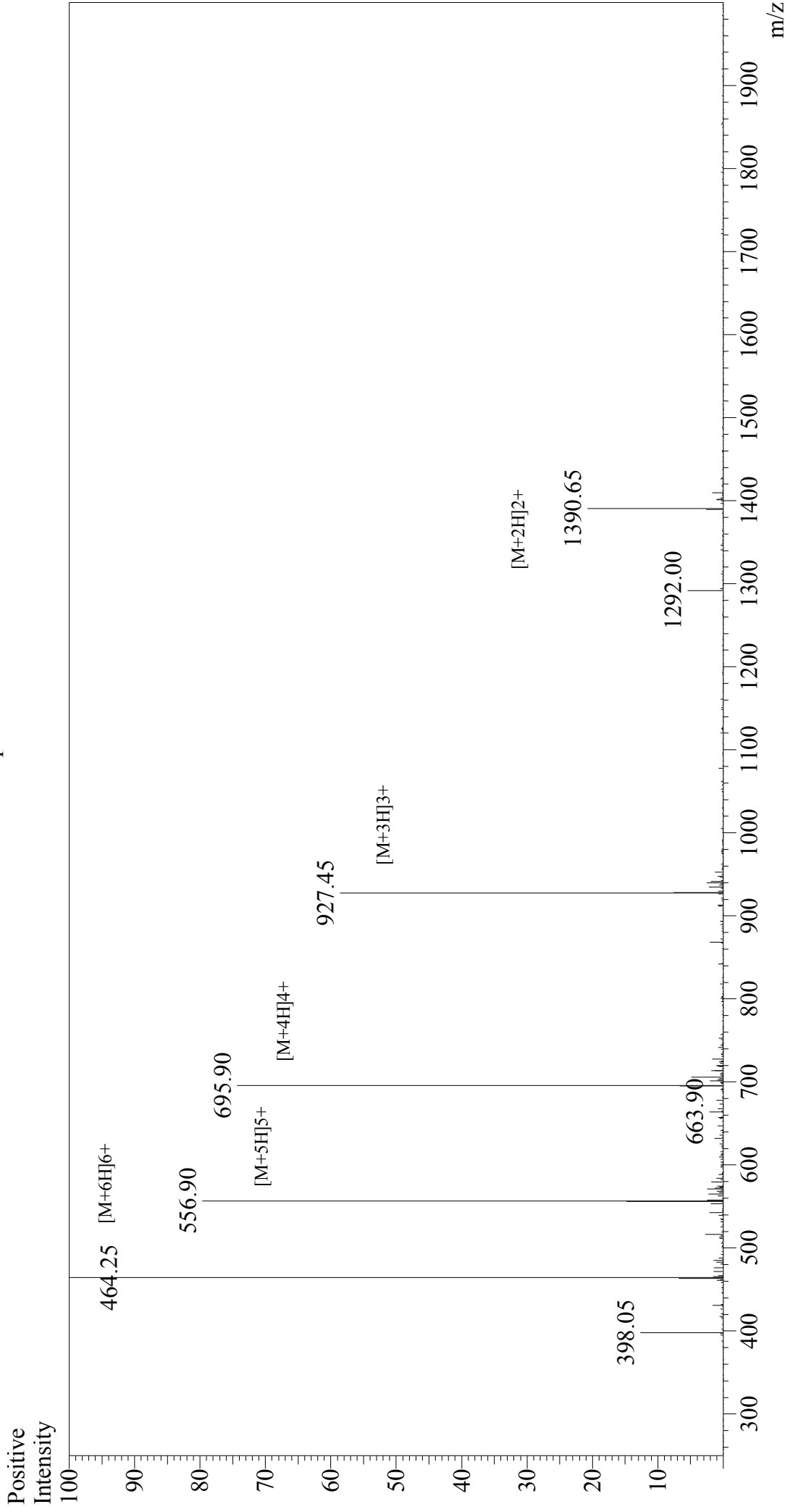


# Mass Spectrum



## Sample Information

Acquired by : Gary  
 Month-Day Processed : 09/14/17  
 Time Processed : 8:48:52  
 Injection Volume : 0.2  
 Sample Name : LAH4  
 Cat No. : RP20096  
 Lot No. : PE6621709  
 Theoretical MW : 2779.47  
 Observed MW : 2779.50

Interface : ESI  
 Nebulizing Gas Flow : 1.5L/min  
 CDL Temp : 250°C  
 Block Temp : 200°C

Interface Bias : +4.5 kV  
 Drying Gas Flow : 5 L/min  
 T.Flow : 0.2 ml/min  
 B.conc : 50% H<sub>2</sub>O/50% MeOH