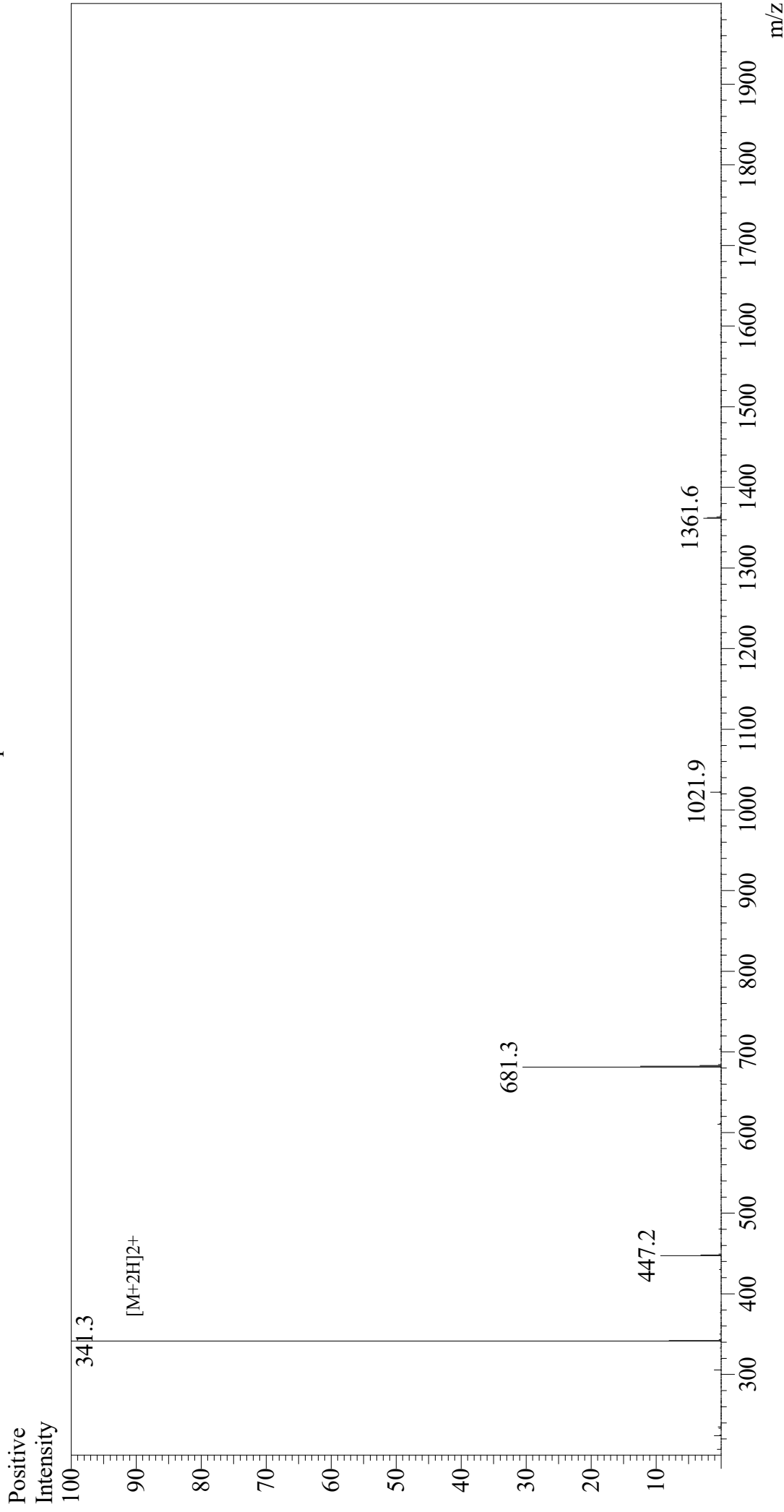


Mass Spectrum



Sample Information
Month-Day Processed : 01/23/21
Time Processed : 7:15:58 PM
Injection Volume : 0.4
Sample Name : PAR-4 Agonist Peptide, amide
Cat No : RP11529
Lot No : E2605121A
Theoretical MW : 680.80
Observed MW : 680.6

Interface : ESI
Nebulizing Gas Flow : 1.5L/min
CDL Temp : 250
Block Temp : 200

Equipment : GK11010007
Interface Bias : +4.5 kV
Drying Gas Flow : 5 L/min
T.Flow : 0.2 ml/min
B.conc : 50% H2O/50% MeOH