

Sample Name: DYKDDDDK Peptide
 Cat No. : RP10586
 Lot No. : E7534520B
 Time Processed: 1:55:06 PM
 Month-Day-Year Processed :02/13/2020

Pump A : 0.065% trifluoroacetic in 100% water (v/v)
 Pump B : 0.05% trifluoroacetic in 100% acetonitrile (v/v)
 Total Flow: 1 ml/min
 Wavelength: 220 nm
 <<LC Time Program>>

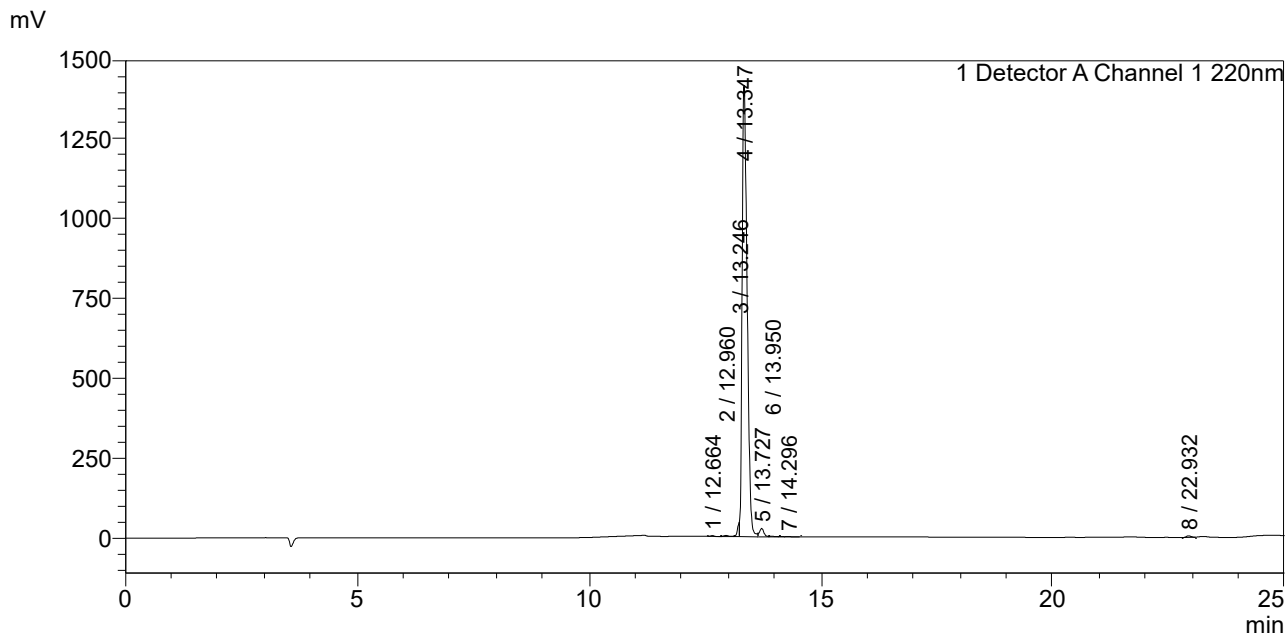
Time	Module	Command	Value
0.01	Pumps	Solvent B Conc.	0
5.00	Pumps	Solvent B Conc.	0
20.00	Pumps	Solvent B Conc.	30
25.00	Pumps	Solvent B Conc.	65
25.01	Pumps	Solvent B Conc.	95
27.00	Pumps	Solvent B Conc.	95
27.01	Pumps	Solvent B Conc.	0
33.00	Pumps	Solvent B Conc.	0
33.01	Controller	Stop	

<<Column Performance>>

<Detector A>

Column : AlltimaTM C18 4.6 x 250 mm
 Equipment: ZJ19010325

<Chromatogram>



<Peak Table>

Detector A Channel 1 220nm

Peak#	Ret. Time	Area	Height	Area%
1	12.664	13333	2655	0.121
2	12.960	34254	3887	0.311
3	13.246	144430	44770	1.312
4	13.347	10583397	1414330	96.165
5	13.727	176252	26318	1.602
6	13.950	11981	1842	0.109
7	14.296	8088	829	0.073
8	22.932	33675	4864	0.306
Total		11005410	1499495	100.000