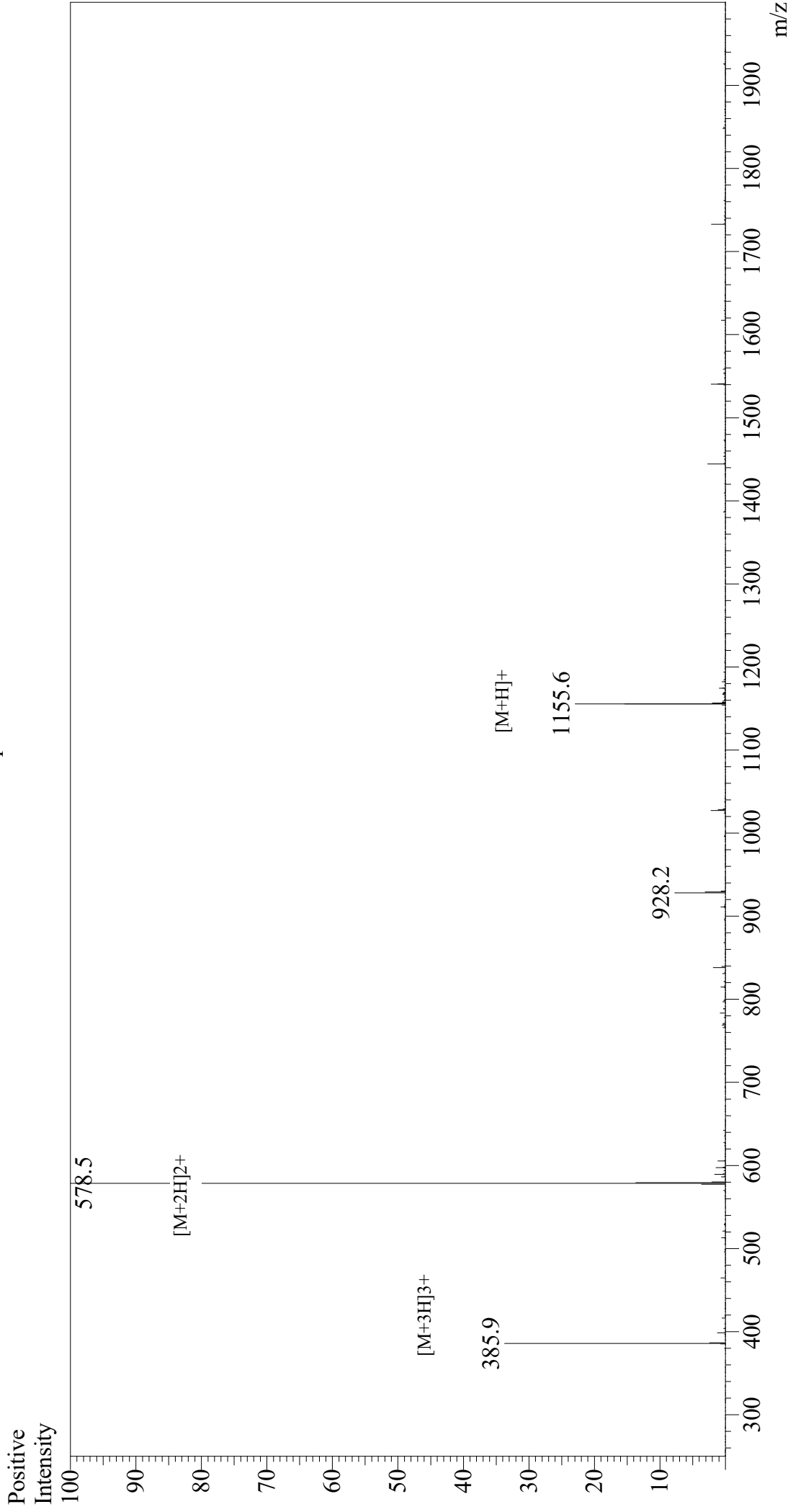


Mass Spectrum



Sample Information
Month-Day/Year Processed : 07/23/21
Time Processed : 7:16:51 AM
Injection Volume : 0.4
Sample Name : hgp100(25-33)
Cat No. : RP20344
Lot No. : E0986821G
Theoretical MW : 1155.30
Observed MW : 1155.0

Interface : ESI
Nebulizing Gas Flow : 1.5L/min
CDL Temp : 250
Block Temp : 200

Equipment : GK11010007
Interface Bias : +3.5 kV
Drying Gas Flow : 5 L/min
T.Flow : 0.2 ml/min
B.conc : 50%H₂O/50%MeOH