

Sample Name: DYKDDDDK Peptide  
 Cat No. : RP10586  
 Lot No. : E9824020E  
 Time Processed: 9:43:08 AM  
 Month-Day-Year Processed :05/13/2020

Pump A : 0.065% trifluoroacetic in 100% water (v/v)  
 Pump B : 0.05% trifluoroacetic in 100% acetonitrile (v/v)  
 Total Flow: 1 ml/min  
 Wavelength: 220 nm  
 <<LC Time Program>>

Time	Module	Command	Value
0.01	Pumps	Solvent B Conc.	5
25.00	Pumps	Solvent B Conc.	65
25.01	Pumps	Solvent B Conc.	95
27.00	Pumps	Solvent B Conc.	95
27.01	Pumps	Solvent B Conc.	5
33.00	Pumps	Solvent B Conc.	5
33.01	Controller	Stop	

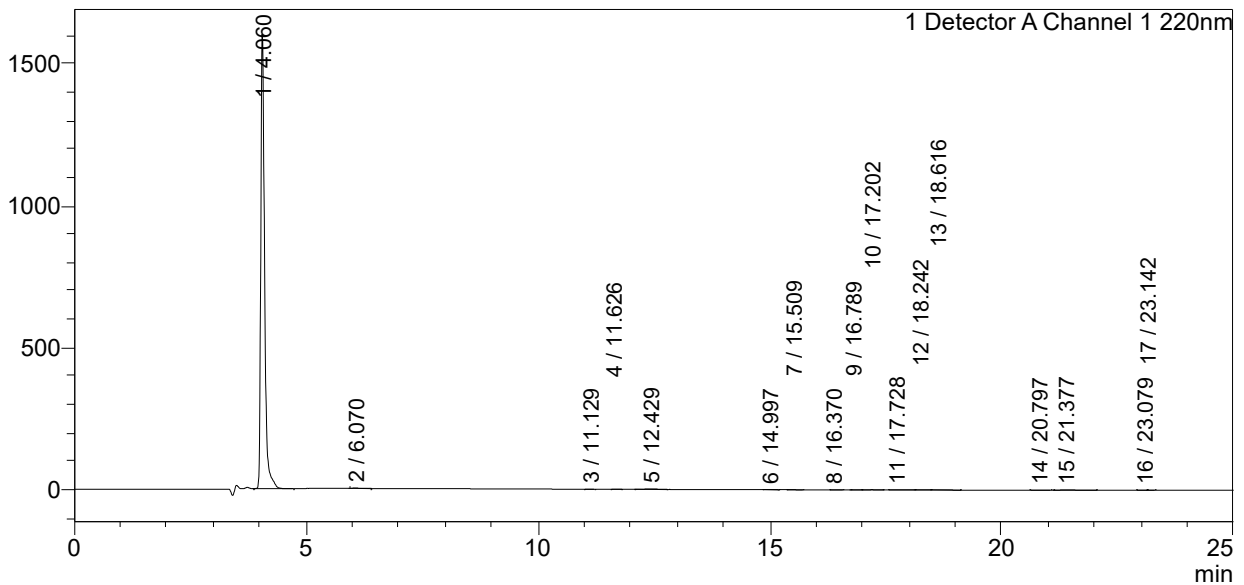
<<Column Performance>>

<Detector A>

Column : Alltima™ C18 4.6 x 250 mm  
 Equipment: ZJ19010325

### <Chromatogram>

mV



### <Peak Table>

Detector A Channel 1 220nm

Peak#	Ret. Time	Area	Height	Area%
1	4.060	9126149	1602684	98.822
2	6.070	14321	1996	0.155
3	11.129	1220	149	0.013
4	11.626	1137	167	0.012
5	12.429	28411	1292	0.308
6	14.997	1222	110	0.013
7	15.509	3964	558	0.043
8	16.370	1397	125	0.015
9	16.789	1241	131	0.013
10	17.202	7709	933	0.083
11	17.728	4302	232	0.047
12	18.242	1122	137	0.012
13	18.616	8681	558	0.094
14	20.797	3988	260	0.043

Peak#	Ret. Time	Area	Height	Area%
15	21.377	27154	1046	0.294
16	23.079	1837	205	0.020
17	23.142	1060	161	0.011
Total		9234916	1610743	100.000